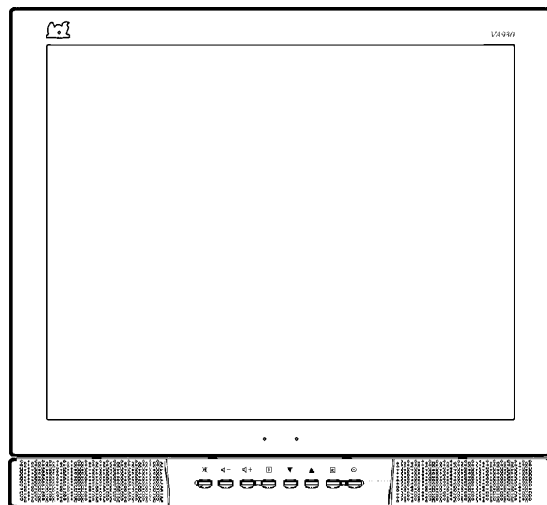


Service Manual

ViewSonic VA930-1

Model No. VLCDS24020-1W

19" Color TFT LCD Display



(VA930-1_SM_584-Rev. 1.0-September 2002)

ViewSonic® 381 Brea Canyon Road, Walnut, California 91789 USA - (800) 888-8583

Copyright

Copyright © 2002 by ViewSonic Corporation. All rights reserved. No part of this publication may be reproduced, transmitted, transcribed, stored in a retrieval system, or translated into any language or computer language, in any form or by any means, electronic, mechanical, magnetic, optical, chemical, manual or otherwise, without the prior written permission of ViewSonic Corporation.

Disclaimer

ViewSonic makes no representations or warranties, either expressed or implied, with respect to the contents hereof and specifically disclaims any warranty of merchantability or fitness for any particular purpose. Further, ViewSonic reserves the right to revise this publication and to make changes from time to time in the contents hereof without obligation of ViewSonic to notify any person of such revision or changes.

Trademarks

ViewSonic is a registered trademark of ViewSonic Corporation.
All other trademarks used within this document are the property of their respective owners.

Revision History

Revision	Date	Description Of Changes	Approval
1a	9/4/02	Initial Reversion DCN-2433	K.Yang
1b	11/05/02	Revise DCN-2433	C.Shen

TABLE OF CONTENTS

1. PRECAUTIONS AND NOTICES.....	1
2. SPECIFICATIONS	2
3. LOCATION OF CONTROLS.....	3
4. ADJUSTING PROCEDURE.....	4
5. BLOCK DIAGRAM.....	9
6. TROUBLE SHOOTING FLOW CHART.....	11
7. SPARE PARTS LIST.....	15
8. EXPLODED DIAGRAM AND SPARE PARTS LIST.....	26
9. SCHEMATIC DIAGRAMS.....	28
10. PCB LAYOUT DIAGRAM.....	38

1. PRECAUTIONS AND NOTICES

Prior to using this manual, please ensure that you have carefully followed all the procedures outlined in the user manual for this product.

Read all of these instructions.

Save these instructions for later use.

Follow all warnings and instructions marked on the product.

Do not use this product near water.

This display should be installed on a solid horizontal base.

When cleaning, use only a neutral detergent cleaner with a soft damp cloth. Do not spray with liquid or aerosol cleaners.

Do not expose this display to direct sunlight or heat. Hot air may cause damage to the cabinet and other parts.

Adequate ventilation must be maintained to ensure reliable and continued operation and to protect the display from overheating. Do not block ventilation slots and openings with objects or install the display in a place where ventilation may be hindered.

Do not install this display near a motor or transformer where strong magnetism is generated. Images on the display will become distorted and the color irregular.

Do not allow metal pieces or objects of any kind fall into the display from ventilation holes.

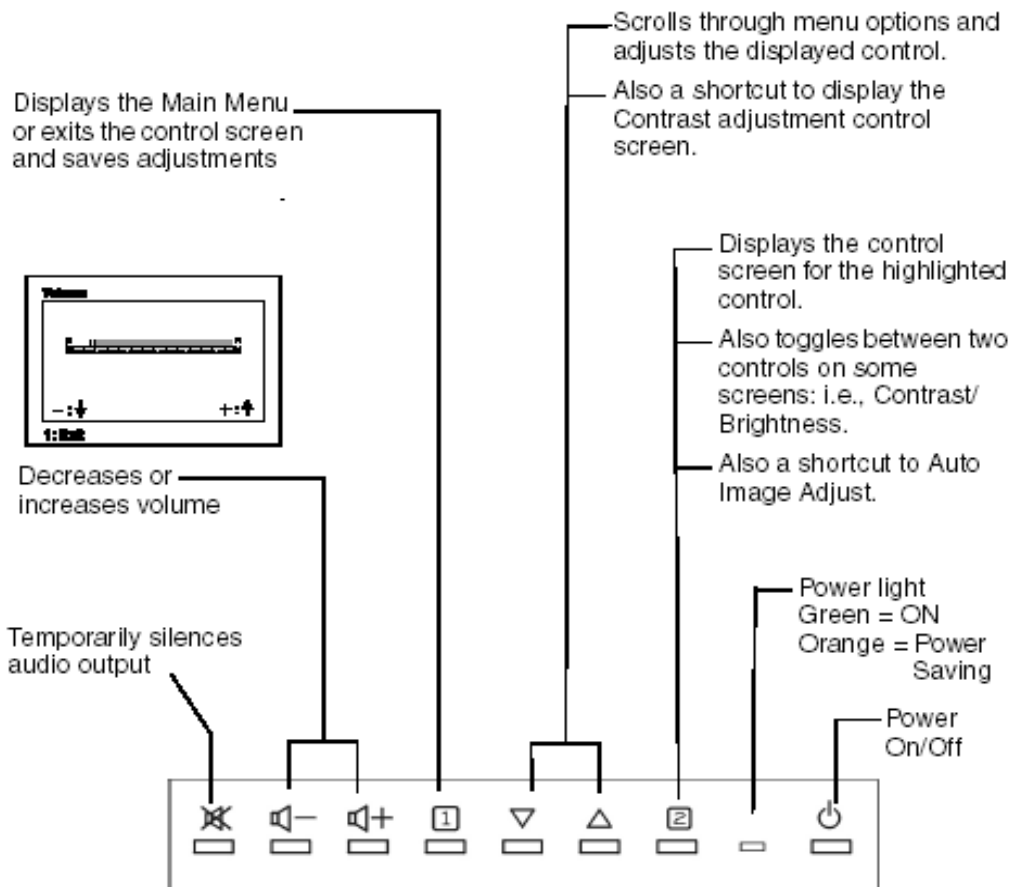
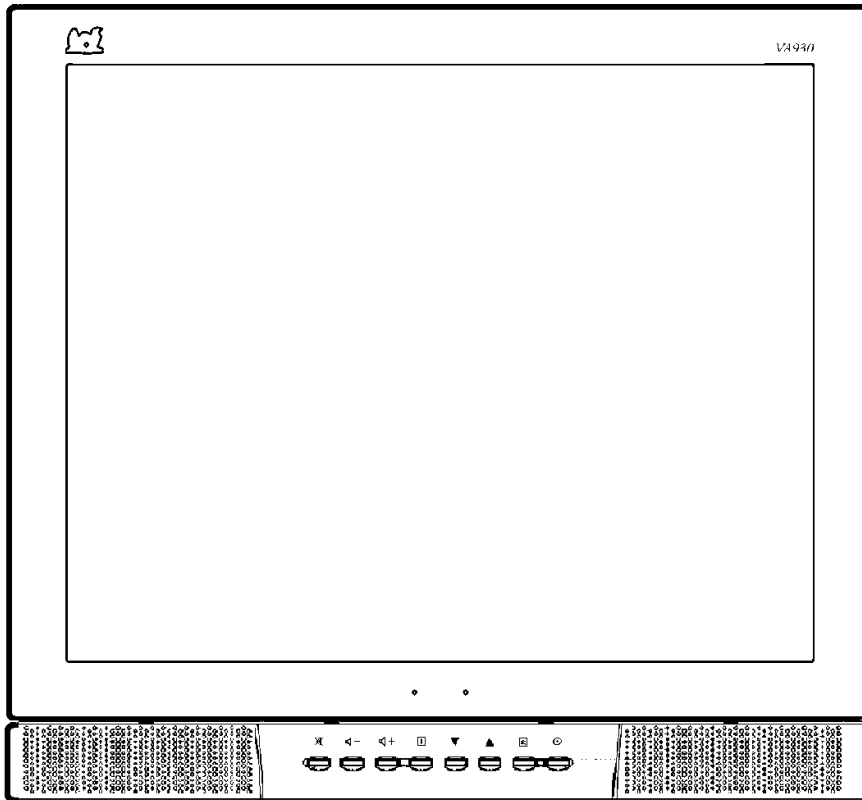
Slots and openings in the cabinet and the back or bottom are provided for ventilation, to ensure reliable operation of the product and to protect it from overheating, those openings must not be blocked or covered. Those openings should never be blocked by placing this product on a bed, sofa, rug, or other similar surface. This product should never be placed near or over a radiator or heat register. This product should not be placed in a built-in installation unless proper ventilation is provided.

2. SPECIFICATIONS

1. Specifications

LCD panel type	19.0" TFT(Fujitsu)
Power Consumption	48 W (typ)
Displayable Resolution	SXGA 1280 x 1024 maximum
Pixel dimension	0.294 mm x 0.294 mm
Display Color	16.7 M
Viewing Angle (CR=10)	Horizontal: $\pm 85^\circ$ Vertical: $\pm 85^\circ$
Response Time	25 ms typ.
Contrast Ratio	500:1 typ.
Brightness	250 cd / m ² typ.
Active Display Area	376 mm horizontal x 301mm vertical
AC/DC adapter	Input:AC 100~264V,47~63 Hz Output:+12V DC.
Dimensions (WxHxD)	439 mm(W) x 465mm(H) x 180mm(D)
Weight	7.5 kg (unit)
Input connector	15 Pin D-Sub.
Power management	YES
Temperature	Operating : 0°C ~ +40°C Storage : -20°C ~ +60°C

3. LOCATION OF CONTROLS

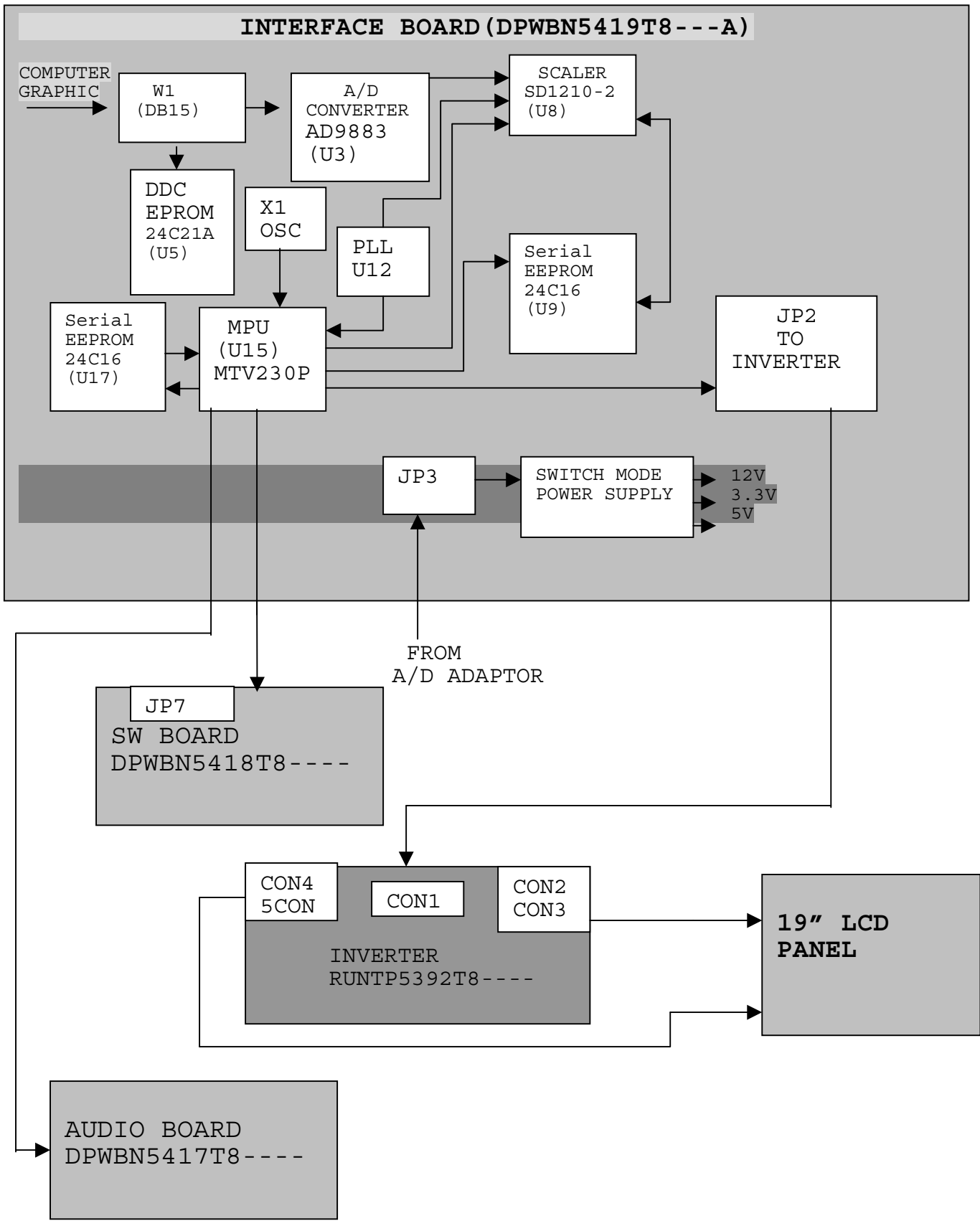


4. ADJUSTING PROCEDURE

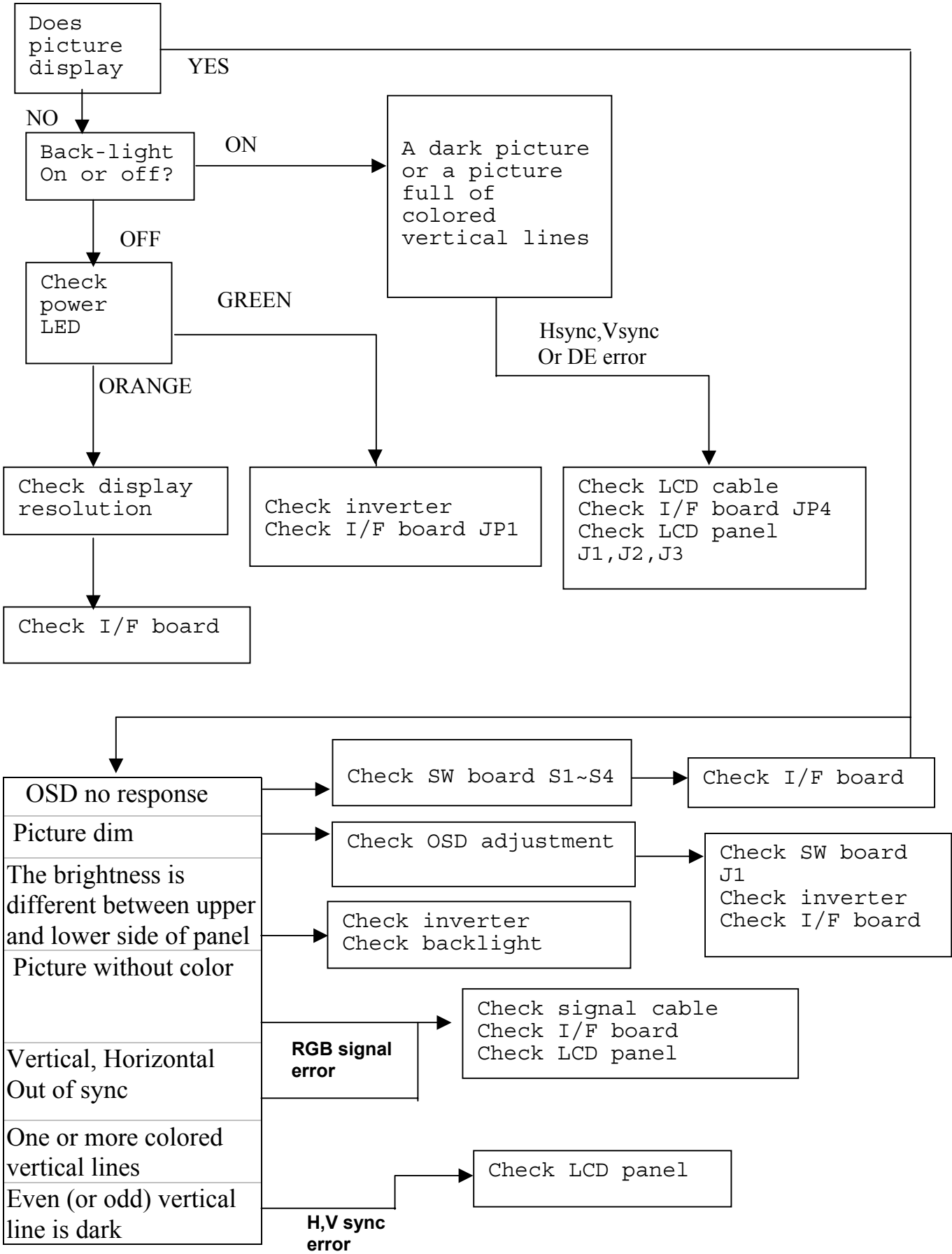
The " adjusting procedure" of VA930 model

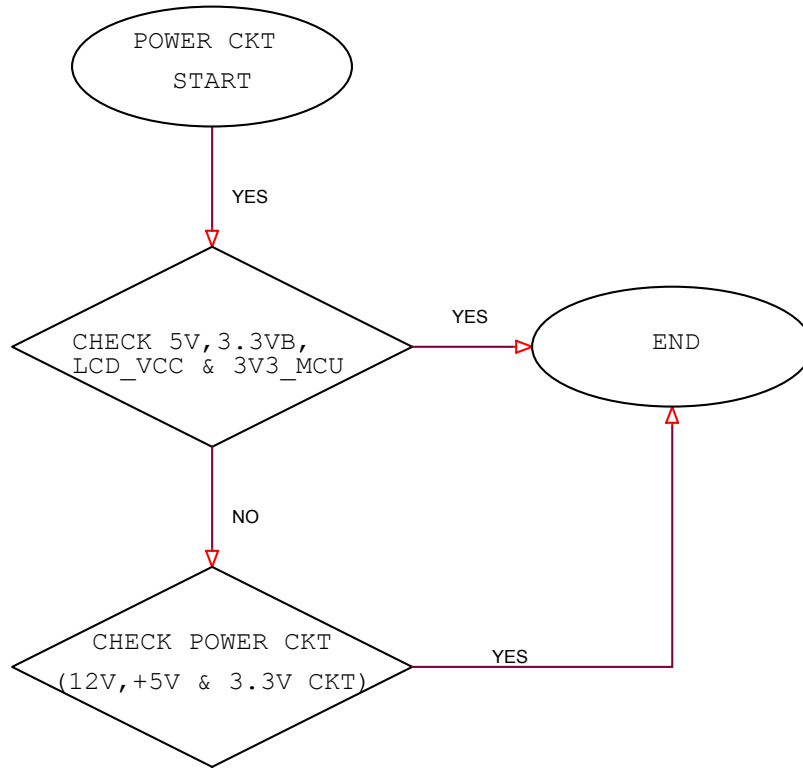
1. Turn off the display by power button key on the front of bezel,
2. Disconnect the DC power cable from power jack at rear side.
3. Press and hold the “▲” button key on the front of the bezel
4. Connect the power cable with power jack, and keep pressing the “▲” button key.
5. Press the power button key to turn the display on, and then release the “▲” and power button.
6. The unit is set into Reset mode, OSD main window will be shown on the display, you can see a red message for “ALL RESET” with a red frame inside OSD windows.
7. The LED lights up with orange and change to green color during reset procedure.
8. OSD changes into a message for "Auto Image Adjust", it disappears after reset procedure.
9. After that the input video signal is showed on display.

5. BLOCK DIAGRAM

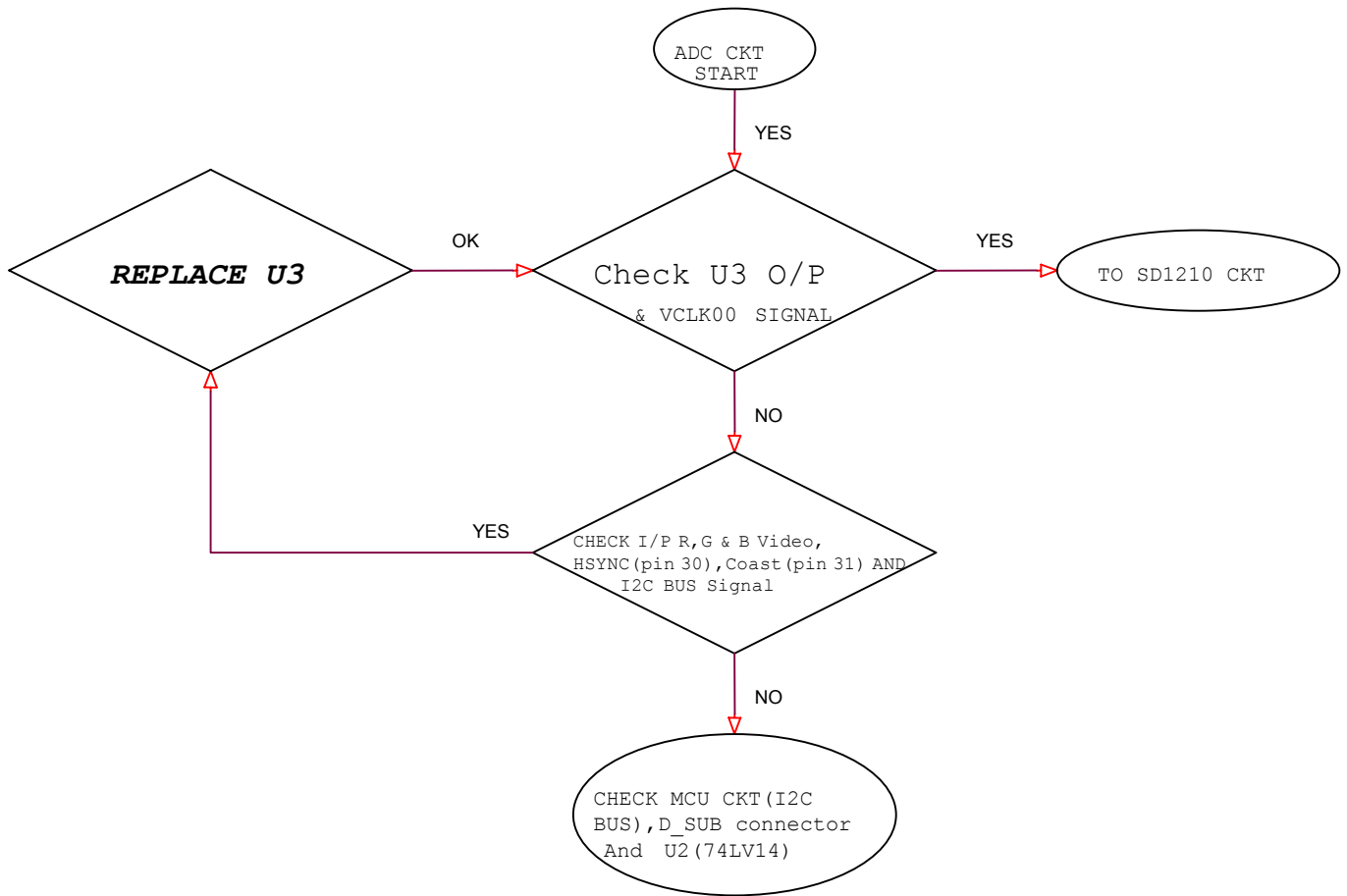


6. TROUBLE SHOOTING FLOW CHART

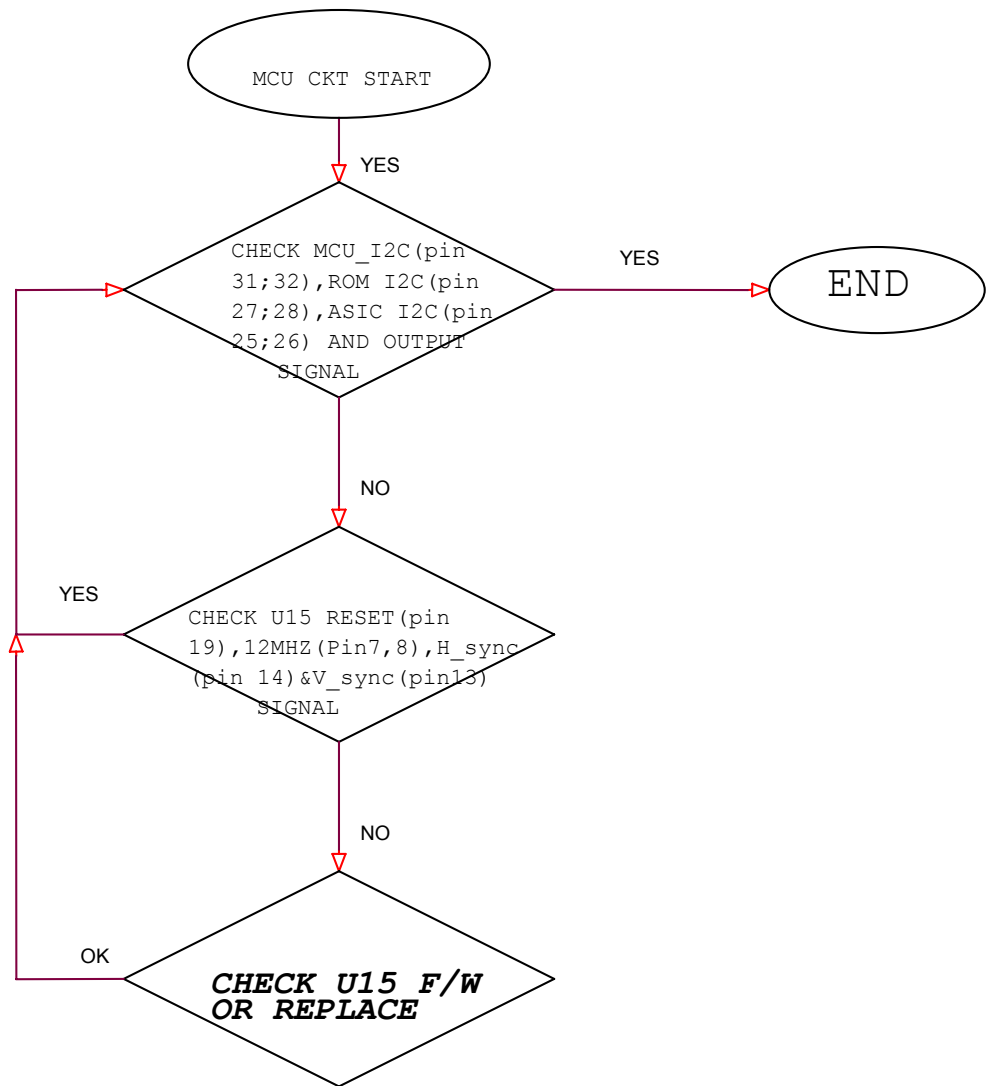




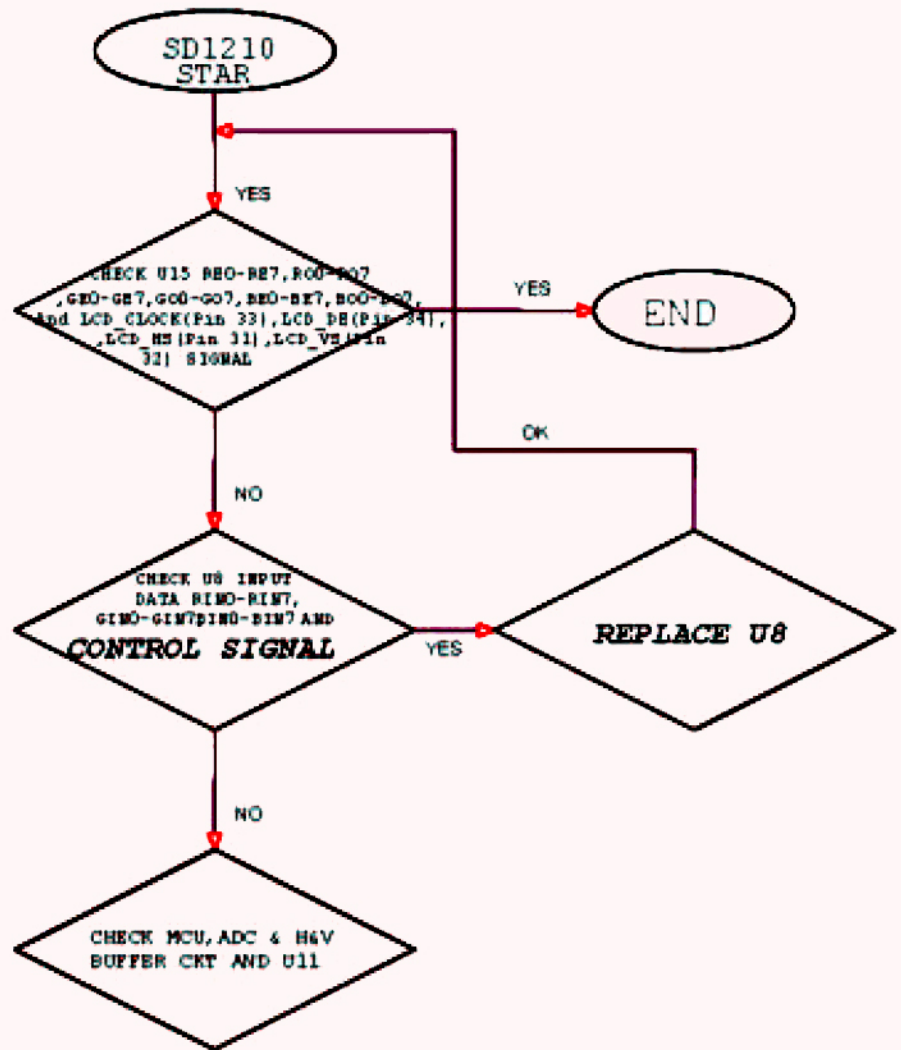
POWER CKT



ADC CKT



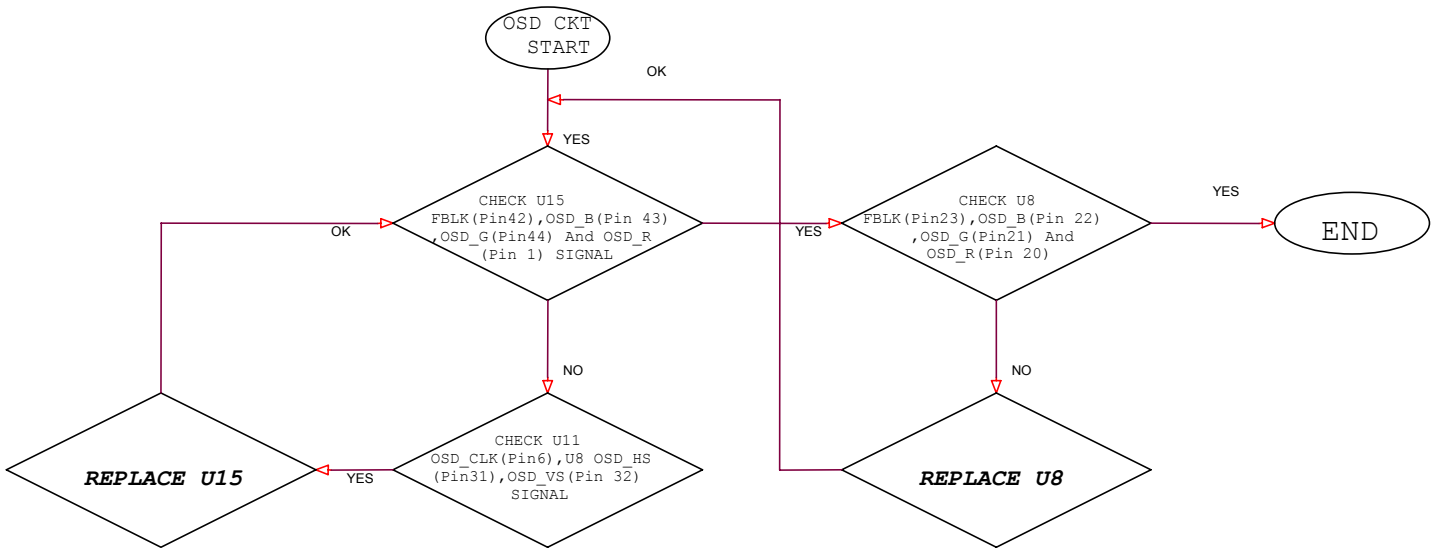
MCU CKT



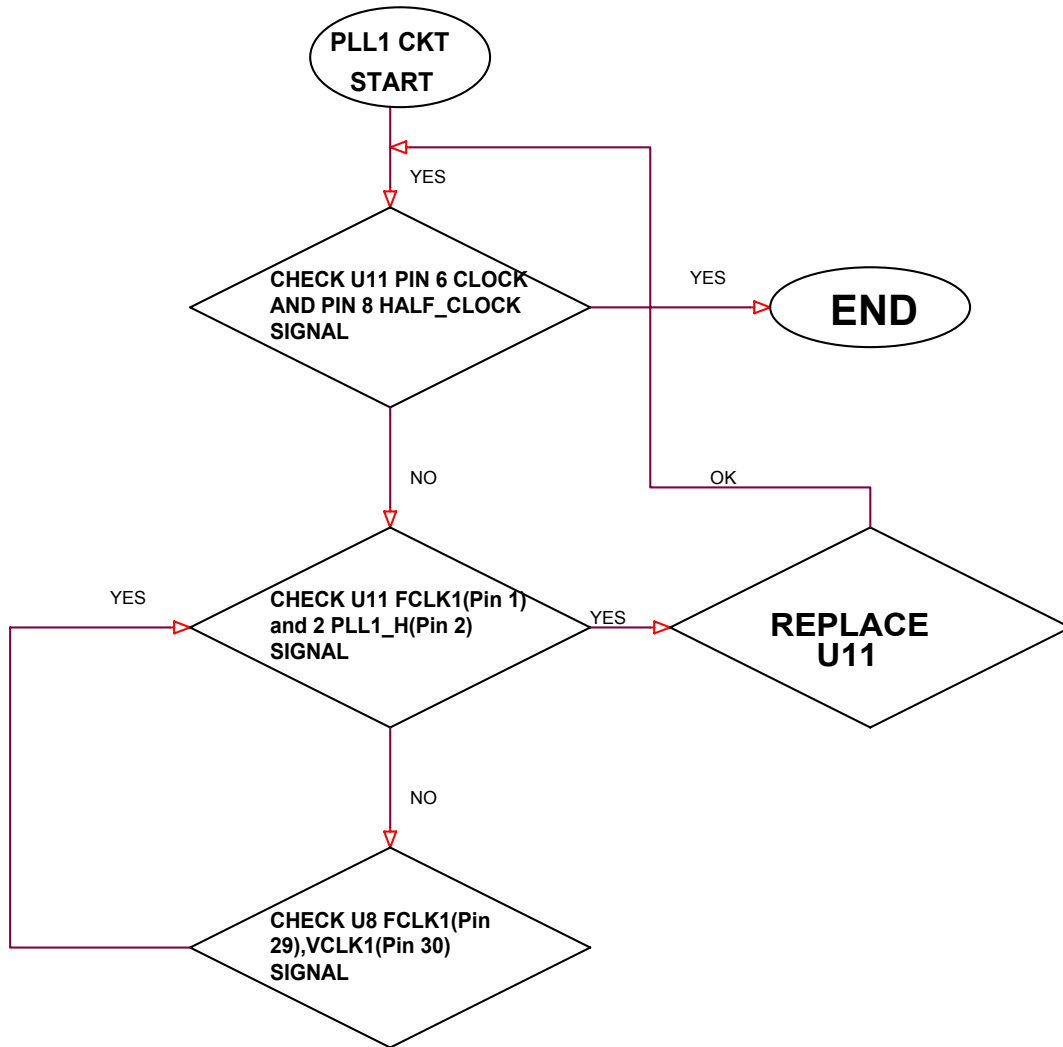
CONTROL

U8 PIN 157 ASIC H
 U8 PIN 158 ASIC Y
 U8 PIN 10 ROM SCL
 U8 PIN 11 ROM SDA
 U8 PIN 13 ASIC SCL
 U8 PIN 14 ASIC SDA
 U8 PIN 16 12MHZ
 U8 PIN 19 RSTRT
 U8 PIN 28 VCLK00
 U8 PIN 29 VCLK1
 U8 PIN 30 VCLK1

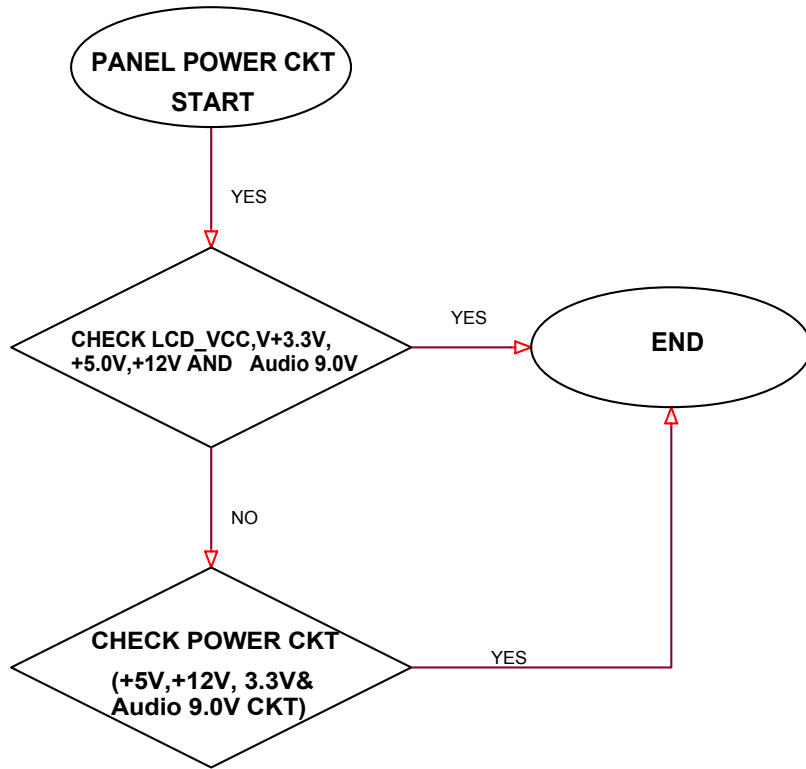
SD1210 CKT



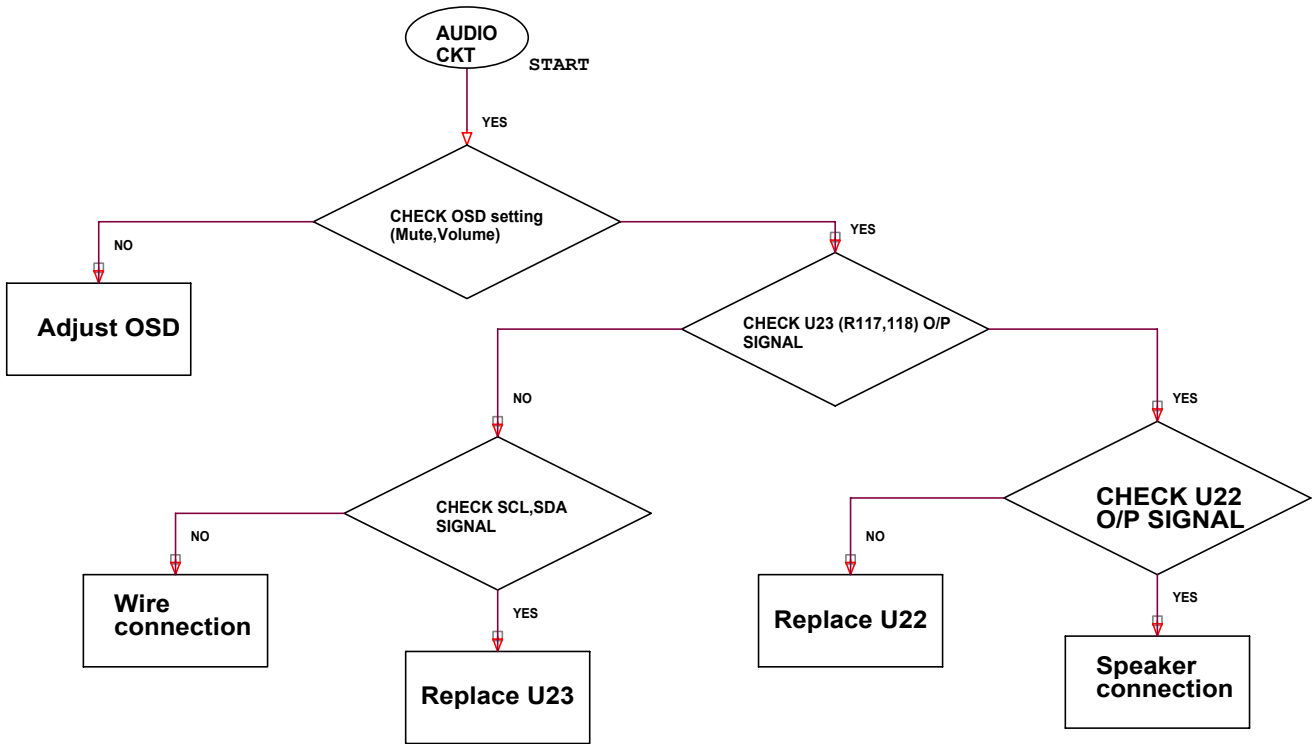
OSD CKT



PLL1 CKT



PANEL POWER CKT



AUDIO CKT

7. SPARE PARTS LIST

SPARE PARTS LIST

LOCATION	VIEWSONIC P/N	PARTS NO	DESCRIPTION
BASE	PL-PS-0715-0168	GSTN-2875D8F---	BASE
BASE FRONT COVER	M-CV-0830-2336	GSTN-2876D8F---	BASE FRONT COVER
BASE-BACK COVER	M-CV-0830-2337	GSTN-2877D8F---	BASE-BACK COVER
BASE METAL	M-MS-0808-8259	LANG-2051D8----	BASE METAL
BASE SUPPORT	M-MS-0808-8260	LANG-2052D8----	BASE SUPPORT
CUSHION-A	P-FM-0602-0776	PCUSG1581D8---A	CUSHION
CUSHION-B	P-FM-0602-0777	PCUSG1582D8----	CUSHION
CUSHION-C	P-FM-0602-0778	PCUSG1583D8----	CUSHION
CUSHION-D	P-FM-0602-0796	PCUSG1584D8---A	CUSHION
HINGE ASSEMBLY	M-MS-0808-8265	MHNGM0031D8----	HINGE ASSEMBLY
HIGH VOLTAGE LABEL		TLABZ3978D8----	HIGH VOLTAGE LABEL
SPEAKER	E-SK-0412-0054	RSPKCL015D84FG-	SPEAKER
CAB-A	C-FP-0301-0894	GCABA2104D8F---	CAB-A
CAB-B	M-CV-0830-2342	GCABB1769D8F---	CAB-B
KNOB	PL-NB-0707-0175	JKNBP2311D8F---	KNOB
LENS	M-MS-0808-8257	HDECP1937D8F---	LENS
KNOB-COVER	M-CV-0830-2335	GMSKP1325D8F---	KNOB-COVER
BACK COVER		GC0VD2442D8F---	BACK COVER
VE-LOGO	M-LB-0813-0710	HBDG-1278D8F---	VE-LOGO
VESA METAL	M-MS-0808-8264	LANGN1714D8----	VESA METAL
D-SUB METAL	M-MS-0808-8258	LANG-2050D8----	D-SUB METAL
HINGE SUPPORT	M-MS-0808-8263	LANGH0029D8----	HINGE SUPPORT
VESA GUM	M-MS-0808-8266	PGUM-1105D8----	VESA GUM
VIEWSONIC TEXT		H1NDA1259D8----	VIEWSONIC TEXT LOGO
LOGO PLATE (BIRDS MARK)	M-MS-0808-6478	HBDGA1724D8----	LOGO PLATE (BIRDS MARK)
BASE*4		XBSSN40P08000--	4ø 8mm BASE*4
BASE SUPPORT*7		XBSSN40P08000--	4ø 8mm BASE SUPPORT*7
BASE FRONT COVER*4		XBPSN30P08000--	3ø 8mm BASEFRONT
SPEAKER*4		XEPSD30P12WS0--	3ø 12mm SPEAKER*4
FOR CAB-A*k2		XBJSD30P10000--	3ø 10mm CAB-A*2
CAB-A*l		XEPSD30P12000--	3ø 12mm CAB-A*1
FOR CAB-B*5		XBMSD30P08000--	3ø 8mm CAB-B*5
FOR SW BOARD*4		XEPSD30P08000--	3ø 8mm SW BOARD*5
D-SUB*3		XBSSD30P04000-A	3ø 4mm D-SUB*3
HINGE SUPPORT*6 (120deg)		XBSSD30P04000-A	3ø 4mm HINGE SUPPORT*6
HINGE SUPPORT		XBPSN40P12JS0--	4ø 12mm HINGE
FOR D-SUB*5		XBJSD30P04000--	3ø 4mm D-SUB*5
HINGE SUPPORT*2		XBPSN40P10JS0--	4ø 10m HINGE SUPPORT*2
BOSS FPR SUB		LB0SM1069D8----	BOSS FPR SUB
KENSINGTON BRACKET	M-MS-0808-8261	LANGF2063D8---A	KENSINGTON BRACKET
DECORATION PLATE		P1SLV0218D8----	DECORATION PLATE
EVA FOR VESA METAL		PCUSS1391D8----	EVA FOR VESA METAL
SPEAKER SCREW RUBBER		PCUSG1609D8----	SPEAKER SCREW RUBBER
EVA FOR HINGE		PCUSS1392D8----	EVA FOR HINGE SUPPORT
FUJITSU PANEL(19")		CPWB-5419T8FUSA	FUJITSU PANEL(19")
CONTROL BOARD	B-SWB-0210-0042	DPWBN5418T8----	CONTROL BOARD ASS'Y
AUDIO BOARD ASS'Y	B-AC-0215-0034	DPWBN5417T8----	AUDIO BOARD ASS'Y
AC ADAPTOR(VSC	A-AD-0114-0155	RUNTP5511T8----	AC ADAPTOR(VSC 12V/5A)
MODEL LABEL		TLABM4280D8T---	MODEL LABEL
USER'S MANUAL		T1NSE2903D8----	USER'S MANUAL
INF FILE DEVICE	A-CD-VA930	DDSKC0023D8----	INF FILE DEVICE
SIGNAL CABLE		QC0DS1584D8D---	SIGNAL CABLE
AC POWER CORD	A-PC-0106-0180	QACC-1126D8D---	AC POWER CORD
UPC LABEL	M-LB-0813-0527	TLABZ3903D8----	UPC LABEL

COLOR KEY	M-MS-0808-6545	TCAD-1222D8----	COLOR KEY
AUDIO CABLE		QC0DK0030D8D---	AUDIO CABLE
POWER CORD(EU 1.8M BLACK)	A-PC-0106-0181	QACC-1228T8D-F-	POWER CORD(EU 1.8M BLACK)
TC099 CARD		TCAD-1277T8----	TC099 CARD
SIN LABEL		TLAB-5373T8----	SIN LABEL
PACKING	P-FM-0602-0797	SPAKA6468D8---A	PACKING
CARTON		SPAKC3325D8---A	CARTON
BAG		SSAKH1356D8-T-A	BAG
PALLET		SPAKW1135D8---A	PALLET
CONNER PAPER	M-MS-0808-5875	SPAKK1703T8Z---	CONNER PAPER
CONNER PAPER		SPAKK6273D8----	CONNER PAPER
SW WIRE	M-WR-0828-0653	QCNEWS0908-8016-	SW WIRE
AUDIO WIRE	M-WR-0828-0652	QCNEWS0907-8015-	AUDIO WIRE
SPEAKER WIRE	M-WR-0828-0650	QCNEWS0904-8030-	SPEAKER WIRE
ASSEMBLY		CPWB-5419T8FUSA	
FUSITSU PANEL (19")	M-LCD-0826-0136	VVFLC48SXC8V--	FUSITSU PANEL (19")
M/B BOARD ASS'Y	B-MB-0201-0697	DPWBN5419T8---A	M/B BOARD ASS'Y
FUSITSU PANEL(19")	B-SB-0221-0463	RUNTP5523T8----	FUSITSU PANEL(19")
MAIN METAL	M-MS-0808-8262	LANGF2068D8----	MAIN METAL
M/B SHIELD	M-MS-0808-8267	PSLDM6477D8----	M/B SHIELD
INVERTER SHIELD		PSLDM6478D8----	INVERTER SHIELD
INVERTER SHIELD		PSLDM6478D8---A	INVERTER SHIELD
INVERTER MYLER		P1SL-1250DS----	INVERTER MYLER
INVERTER MYLAR		P1SL-1250D8---A	INVERTER MYLAR
INVERTER SHIELD		P1SL-1256D8----	INVERTER SHIELD MYLER
INVERTER SHIELD		P1SL-1256D8---A	INVERTER SHIELD MYLAR
FOR LCD PANEL		XBJSD30P10000--	FOR LCD PANEL
FOR INV*4		XH1SD30P06000--	3ø 6mm INV*4
M/B*5		XH1SD30P06000--	3ø 6mm M/B*5
AU*4		XH1SD30P06000--	3ø 6m .1U*4
SHIELD-19		XH1SD30P06000--	3ø 6mm SHIELD*9
INV*5		XH1SD30P06000--	3ø 6mm INV*5
PANEL WIRE HOLDER		LHLDW1145D8----	PANEL WIRE HOLDER
PANEL WIRE		QC0DS1576D8----	PANEL WIRE
INVERTER WIRE	M-WR-0828-0651	QCNEWS0906-8022-	INVERTER WIRE
LOCATION	VIEWSONIC P/N	PARTS NO	DESCRIPTION
I/F BOARD		QPWB-5419T8---C	I/F BOARD
C1		VCLFHN1HG104Z-A	C .1U Z 50V
C2		VCLFHN1HG104Z-A	C .1U Z 50V
C3		VCLFHN1HG104Z-A	C .1U Z 50V
C4		VCLFHN1HG104Z-A	C .1U Z 50V
C8		VCLFHN1HG104Z-A	C .1U Z 50V
C9		VCLFHN1HG104Z-A	C .1U Z 50V
C10		VCLFHN1HG104Z-A	C .1U Z 50V
C11		VCLFHN1HG104Z-A	C .1U Z 50V
C12		VCLFHN1HG104Z-A	C .1U Z 50V
C13		VCLFHN1HG104Z-A	C .1U Z 50V
C14		VCLFHN1HG104Z-A	C .1U Z 50V
C19 (10UF/16V)		VCEABN1CX106M-A	E 10U M 16V
C19 2nd SOURCE		VCEABN1CX106MNA	E 10U M 16V 2nd
C20		VCLFHN1HG104Z-A	C .1U Z 50V
C21		VCLFHN1HG104Z-A	C .1U Z 50V
C22		VCEABN1CX107M-A	E 100U M 16V
C22 2nd SOURCE		VCEABN1CX107MNA	E 100U M 16V 2nd
C27		VCLFHN1HG104Z-A	C .1U Z 50V
C28		VCEABN1CX107M-A	E 100U M 16V
C28 2nd SOURCE		VCEABN1CX107MNA	E 100U M 16V 2nd

C29		VCLFHN1HG104Z-A	C .1U Z 50V
C30		VCLFHN1HG473Z-A	C .047U Z 50V
C31		VCICHN1HB150J-A	C 15U J 50V
C31 2nd SOURCE		VCLFHN1HG150J-A	C 15U J 50V 2nd
C33		VCLFHN1HG473Z-A	C .047U Z 50V
C34		VCICHN1HB150J-A	C 15U J 50V
C34 2nd SOURCE		VCICHN1HH150K-A	C 15U K 50V 2nd
C34 2nd SOURCE		VCLFHN1HG150J-A	C 15U J 50V 2nd
C35		VCLFHN1HG473Z-A	C .047U Z 50V
C36		VCICHN1HB150J-A	C 15U J 50V
C36 2nd SOURCE		VCICHN1HH150K-A	C 15U K 50V 2nd
C36 2nd SOURCE		VCLFHN1HG150J-A	C 15U J 50V 2nd
C37	E-C-0404-4885	VCICHN1HH330J-A	C 33 J 50V
C38		VCLFHN1HG104Z-A	C .1U Z 50V
C39		VCICHN1HG393M-A	C .0390 M 50V
C40		VCICHN1HH470J-A	C 47U J 50V
C40 2nd SOURCE		VCLFHN1HG470K-A	C 47U K 50V 2nd
C41		VCIRHN1HG392M-A	C 3900P M 50V
C42		VCLFHN1HG104Z-A	C .1U Z 50V
C43		VCLFHN1HG104Z-A	C .1U Z 50V
C44		VCLFHN1HG100J-A	C 10U J 50V
C45	E-C-0404-4885	VCICHN1HH330J-A	C 33 J 50V
C47		VCICHN1HH470J-A	C 47U J 50V
C47 2nd SOURCE		VCLFHN1HG470K-A	C 47U K 50V 2nd
C48		VCLFHN1HG104Z-A	C .1U Z 50V
C49		VCICHN1HG102K-A	C 1000P K 50V
C62	E-C-0404-4885	VCICHN1HH330J-A	C 33 J 50V
C63	E-C-0404-4885	VCICHN1HH330J-A	C 33 J 50V
C70		VCEABN1CX107M-A	E 100U M 16V
C70 2nd SOURCE		VCEABN1CX107MNA	E 100U M 16V 2nd
C71	E-C-0404-4885	VCICHN1HH330J-A	C 33 J 50V
C72		VCIRHN1HG392M-A	C 3900P M 50V
C73		VCLFHN1HG104Z-A	C .1U Z 50V
C74		VCICHN1HH470J-A	C 47U J 50V
C74 2nd SOURCE		VCLFHN1HG470K-A	C 47U K 50V 2nd
C75		VCEABN1CX107M-A	E 100U M 16V
C75 2nd SOURCE		VCEABN1CX107MNA	E 100U M 16V 2nd
C76		VCLFHN1HG104Z-A	C .1U Z 50V
C77		VCLFHN1HG104Z-A	C .1U Z 50V
C78		VCLFHN1HG104Z-A	C .1U Z 50V
C79		VCLFHN1HG104Z-A	C .1U Z 50V
C80		VCLFHN1HG104Z-A	C .1U Z 50V
C81		VCLFHN1HG104Z-A	C .1U Z 50V
C82		VCLFHN1HG104Z-A	C .1U Z 50V
C83		VCLFHN1HG104Z-A	C .1U Z 50V
C84		VCLFHN1HG104Z-A	C .1U Z 50V
C85		VCLFHN1HG104Z-A	C .1U Z 50V
C86		VCLFHN1HG104Z-A	C .1U Z 50V
C87		VCLFHN1HG104Z-A	C .1U Z 50V
C88		VCLFHN1HG104Z-A	C .1U Z 50V
C89		VCLFHN1HG104Z-A	C .1U Z 56
C92		VCLFHN1HG104Z-A	C .1U Z 50V
C95		VCIRHN1HG103K-A	C .01U K 50V
C96		VCLFHN1HG104Z-A	C .1U Z 50V
C98		VCLFHN1HG104Z-A	C .1U Z 50V
C99		VCEABN1CX107M-A	E 100U M 16V
C99 2nd SOURCE		VCEABN1CX107MNA	E 100U M 16V 2nd
C100		VCEABN1CX226M-A	E 22U M 16V
C101		VCLFHN1HG104Z-A	C .1U Z 50V

C102		VCIRHN1HG103K-A	C .01U K 50V
C103		VCLFHN1HG104Z-A	C .1U Z 50V
C104		VCIRHN1HG103K-A	C .01U K 50V
C105		VCLFHN1HG104Z-A	C .1U Z 50V
C106		VCIRHN1HG103K-A	C .01U K 50V
C107		VCLFHN1HG104Z-A	C .1U Z 50V
C108		VCIRHN1HG103K-A	C .01U K 50V
C109		VCLFHN1HG104Z-A	C .1U Z 50V
C110		VCIRHN1HG103K-A	C .01U K 50V
C111		VCLFHN1HG104Z-A	C .1U Z 50V
C112		VCIRHN1HG103K-A	C .01U K 50V
C113		VCEABN1CX226M-A	E 22U M 16V
C114		VCLFHN1HG104Z-A	C .1U Z 50V
C115		VCIRHN1HG103K-A	C .01U K 50V
C116		VCLFHN1HG104Z-A	C .1U Z 50V
C117		VCIRHN1HG103K-A	C .01U K 50V
C118		VCEABN1CX226M-A	E 22U M 16V
C119		VCLFHN1HG104Z-A	C .1U Z 50V
C120		VCIRHN1HG103K-A	C .01U K 50V
C121		VCLFHN1HG104Z-A	C .1U Z 50V
C122		VCIRHN1HG103K-A	C .01U K 50V
C123		VCLFHN1HG104Z-A	C .1U Z 50V
C124		VCLFCN1CG105Z-A	C .1U Z 16V
C125		VCICHN1HH101J-A	C 1000 J 50V
C125 2nd SOURCE		VCLFHN1HG101K-A	C 100U J 50V 2nd
C128		VCICHN1HH220J-A	C 22U J 50V
C129		VCICHN1HH220J-A	C 22U J 50V
C130		VCICHN1HH101J-A	C 100U J 50V
C 130 2nd SOURCE		VCLFHN1HG101K-A	C 100U J 50V 2nd
C131	E-C-0404-4885	VCICHN1HH330J-A	C 33 J 50V
C132		VCLFHN1HG104Z-A	C .1U Z 50V
C132		VCLFHN1HG104Z-A	C .1U Z 50V
C133		VCLFHN1HG104Z-A	C .1U Z 50V
C133		VCLFHN1HG104Z-A	C .1U Z 50V
C135		VCLFHN1HG104Z-A	C .1U Z 50V
C135		VCLFHN1HG104Z-A	C .1U Z 50V
C136	E-C-0404-3972	VCEACU1CH477M-P	E 470U M 16V
C136 2nd SOURCE		VCEACU1CG477M-P	E 470U M 16V 2nd
C137		VCLFHN1HG104Z-A	C .1U Z 50V
C137		VCLFHN1HG104Z-A	C .1U Z 50V
C138		VCLFHN1HG104Z-A	C .1U Z 50V
C138		VCLFHN1HG104Z-A	C .1U Z 50V
C139		VCLFHN1HG104Z-A	C .1U Z 50V
C139		VCLFHN1HG104Z-A	C .1U Z 50V
C141		VCEABN1CX107M-A	E 100U M 16V
C141 2nd SOURCE		VCEABN1CX107MNA	E 100U M 16V 2nd
C142	E-C-0404-3972	VCEACU1CH477M-P	E 470U M 16V
C142 2nd SOURCE		VCEACU1CG477M-P	E 470U M 16V 2nd
C143		VCEABN1CX107M-A	E 100U M 16
C143 2nd SOURCE		VCEABN1CX107MNA	E 100U M 16V 2nd
C144	E-C-0404-3972	VCEACU1CH477M-P	E 470U M 16V
C144 2nd SOURCE		VCEACU1CG477M-P	E 470U M 16V 2nd
C145		VCLFHN1HG104Z-A	C .1U Z 50V
C145		VCLFHN1HG104Z-A	C .1U Z 50V
C146	E-C-0404-3972	VCEACU1CH477M-P	E 470U M 16V
C146 2nd SOURCE		VCEACU1CG477M-P	E 470U M 16V 2nd
C147		VCEABN1CX107M-A	E 100U M 16V
C147 2nd SOURCE		VCEABN1CX107MNA	E 100U M 16V 2nd
C148		VCICHN1EG334Z-A	C .33 Z 25V

C149		VCEABN1CX107M-A	E 100U M 16V
C149 2nd SOURCE		VCEABN1CX107MNA	E 1000 M 16V 2nd
C150		VCLFHN1HG104Z-A	C .1U Z 50V
C150		VCLFHN1HG104Z-A	C .1U Z 50V
C151		VCEABN1CX107M-A	E 100U M 16V
C151 2nd SOURCE		VCEABN1CX107MNA	E 100U M 16V 2nd
C152		VCLFHN1HG104Z-A	C .1U Z 50V
C152		VCLFHN1HG104Z-A	C .1U Z 50V
C153		VCICHN1EG334Z-A	C .33 Z 25V
C154		VCICHN1EG334Z-A	C .33 Z 25V
C155		VCEABN1CX107M-A	E 100U M 16V
C155 2nd SOURCE		VCEABN1CX107MNA	E 100U M 16V 2nd
C156		VCEABN1CX107M-A	E 100U M 16V
C156 2nd SOURCE		VCEABN1CX107MNA	E 100U M 16V 2nd
C157		VCLFHN1HG104Z-A	C .1U Z 50V
C157		VCLFHN1HG104Z-A	C .1U Z 50V
C158		VCICHN1EG334Z-A	C .33 Z 25V
C161		VCLFHN1HG104Z-A	C .1U Z 50V
C162		VCLFHN1HG100J-A	C 10U J 50V
C163		VCLFHN1HG100J-A	C 10U J 50V
C164		VCLFHN1HG100J-A	C 10U J 50V
C165		VCLFHN1HG100J-A	C 10U J 50V
C166		VCLFHN1HG100J-A	C 10U J 50V
C169		VCLFHN1HG104Z-A	C .1U Z 50V
D1		VSDBAV99-----A	DIODE
D2		VSDBAV99-----A	DIODE
D3		VSDBAV99-----A	DIODE
D3 2nd SOURCE		VSDBAV99A-----A	DIODE
D4		VSDAN202UT106-A	DIODE
D6	E-D-0403-0531	VSD1N4148----A	DIODE
D7		VSDSS22-----A	SCHOTTKY DIODE
D7 2nd SOURCE		VSDSS24-----A	SCHOTTKY DIODE 2nd
D7 2nd SOURCE		VSDSK22-----A	SCHOTTKY DIODE 2nd
D7 2nd SOURCE		VSDSK24-----A	SCHOTTKY DIODE 2nd
D7 2nd SOURCE		VSDSS34-----A	SCHOTTKY DIODE 2nd
D7 2nd SOURCE		VSDLYSS32-----A	SCHOTTKY DIODE 2nd
D7 2nd SOURCE		VSDSS34---G1-A	SCHOTTKY DIODE 2nd
D7 2nd SOURCE		VSDSM340A----A	SCHOTTKY DIODE 2nd
D7 2nd SOURCE		VSDB340A-----A	SCHOTTKY DIODE 2nd
D7 2nd SOURCE		VSDLYSS24----A	SCHOTTKY DIODE 2nd
ZD1		VSZRLZ5.6B----A	ZENER DIODE
ZD2		VSZRLZ5.6B----A	ZENER DIODE
ZD3		VSZRLZ5.6B----A	ZENER DIODE
ZD4		VSZRLZ5.6B----A	ZENER DIODE
ZD5		VSZRLZ5.6B----A	ZENER DIODE
ZD10		VSZRLZ5.6B----A	ZENER DIODE
F1	E-FS-0410-0099	QFS-Z402F-81UAA	FUSE 4A 125V
HEAT SINK FOR U18	M-MS-0808-8269	PRDA-1252D8----	RADIATOR
HEAT SINK FOR U8		PRDAA6380D8----	RADIATOR
J1 (FI-SE30P-1-F)		QCNCNP1962T8----	CONNECTOR 30PIN
J1 2nd SOURCE (FI-S30P-HF)		QCNCNP1961T8----	CONNECTOR 30PIN 2nd
JP1 (OSD CON)		VCNCNP0908REJST-	CONNECTOR 8PIN
JP2 (INVERTER CON)		VCNCNP0906REJST-	CONNECTOR 6PIN
JP3 (POWER JACK)		QJAKP1044T8----	POWER JACK
JP4 (AUDIO CON)		VCNCNP0907REJST-	CONNECTOR 7PIN
L30		RF1L-514778111-	INDUCTOR 100UH
L30 2nd SOURCE		RCHOL1073T8101-	INDUCTOR 100UH 2nd
L30 2nd SOURCE		RCHOL1090T8111-	INDUCTOR 100UH 2nd

U1		VSIA1C1732----A	IC 4PIN
U3	E-IC-0401-2106	VSIAD9883-140-D	IC 80PIN
U4		VSISN74LV14A--A	IC 7PIN
U5 (ANALOG DDC)	E-IC-0401-2137	VSI24C21-----	IC 8PIN
U5 2nd SOURCE		VSI24LCS21A----	IC 8PIN 2nd
U5 2nd SOURCE	E-IC-0401-2287	VSI24LC21A-SN-A	IC 8PIN 2nd
U8		VSISD1210----D	IC 160PIN
U9	E-IC-0401-2584	VSI24C16-----	IC 8PIN
U9 2nd SOURCE		VSI24C16ADP01--	IC 8PIN 2nd
U9 2nd SOURCE		VSI24C16BP3----	IC 8PIN 2nd
U9 2nd SOURCE		VSI24WC16P-----	IC 8PIN 2nd
U10		VSI74AHC1G14-TA	IC SPIN
U10 2nd SOURCE		VSI74AHCT1G14TA	IC SPIN 2nd
U11		VSI9173-01---	IC 8PIN
U11 2nd SOURCE		VSIMK9173-01--A	IC 8PIN 2nd
U12		VSI74HC4053---A	IC 16PIN
U13	E-IC-0401-2564	VSISN75LVDS83-A	IC 56PIN
U14	E-IC-0401-2564	VSISN75LVDS83-A	IC 56PIN
U14 2nd SOURCE		VSIDS90C383A--A	IC 56PIN 2nd
U14 2nd SOURCE		VSI63LVDM83A--A	IC 56PIN 2nd
U14 2nd SOURCE		VSICS5828-----A	IC 56PIN 2nd
U15	E-IC-0401-2108	VSISM0230-----S	IC 44PIN
U15 (PLCC 44)		QSOC11642T844--	CONNECTOR 44PIN
U15 2nd SOURCE		QSOC11645T844--	CONNECTOR 44PIN 2nd
U15 2nd SOURCE		QSOC11660T844--	CONNECTOR 44PIN 2nd
U16		VSI74LCX125MXFA	IC 14PIN
U17	E-IC-0401-2584	VSI24C16-----	IC 8PIN
U17 2nd SOURCE		VSI24C16ADP01--	IC 8PIN 2nd
U17 2nd SOURCE		VSI24C16BP3----	IC 8PIN 2nd
U17 2nd SOURCE		VSI24WC16P-----	IC 8PIN 2nd
U18		VSILM2596S-5---	IC 8PIN
U19		VSIS19433DY---A	IC 8PIN
U20		VSIS19433DY---A	IC 8PIN
U20 2nd SOURCE		VSIFDS4435----A	IC 8PIN 2nd
U20 2nd SOURCE		VSICEM4435----A	IC 8PIN 2nd
U20 2nd SOURCE		VSICEM9433----A	IC 8PIN 2nd
U21		VSIA1C1084-33-A	IC 3PIN
U21 2nd SOURCE		VSIAPL1084-33-A	IC 3PIN 2nd
U21 2nd SOURCE		VSIRT9171-33--A	IC 3PIN 2nd
W1 (DB15,PC99)		QCNC1173T8----	VGA CONNECTOR
W1 2nd SOURCE		QCNC1176T8----	VGA CONNECTOR 2nd
X1		RCRSL1132T8----	OSCILLATOR (12MHZ)
X1 2nd SOURCE	E-X-0415-0127	RCRSL1167T8----	OSCILLATOR 2nd
X1 2nd SOURCE		RCRSL1215T8----	OSCILLATOR 2nd
X1 2nd SOURCE		RCRSL1217T8----	OSCILLATOR 2nd
Q1		VST2N3904-----A	TRANSISTOR
Q2		VST2N3904-----A	TRANSISTOR
Q3		VST2N3906-----A	TRANSISTOR
Q4		VST2N3906-----A	TRANSISTOR
Q5		VST2N3904-----A	TRANSISTOR
Q6		VSTIRLMS1503--A	TRANSISTOR
Q7		VSTIRLMS1503--A	TRANSISTOR
Q7 2nd SOURCE		VSTBSH107-----A	TRANSISTOR 2nd
Q7 2nd SOURCE		VSISI3442DV---A	TRANSISTOR 2nd
Q8		VST2N3904-----A	TRANSISTOR
Q9		VST2N3904-----A	TRANSISTOR
Q10		VST2N3904-----A	TRANSISTOR
Q11		VST2N3904-----A	TRANSISTOR
Q12		VST2N3904-----A	TRANSISTOR

Q12 2nd SOURCE		VSTMMBT3904T-MA	TRANSISTOR 2nd
Q12 2nd SOURCE		VSTMMBT3904LT-A	TRANSISTOR 2nd
L2		RFIL-5231T8600A	BEAD CORE (0805)
L3		RFIL-5231T8600A	BEAD CORE (0805)
L4		RFIL-5240T8110A	BEAD CORE
L5		RFIL-5240T8110A	BEAD CORE
L6		RFIL-5240T8110A	BEAD CORE
L7		VRMDNVG--000J-A	SMT 0 J 1/16W
L8		RFIL-5232T8300A	BEAD CORE (0603)
L9		RFIL-5232T8300A	BEAD CORE (0603)
L10		RFIL-5232T8300A	BEAD CORE (0603)
L11		RFIL-5232T8300A	BEAD CORE (0603)
L12		RFIL-5232T8300A	BEAD CORE (0603)
L16		VRMDNVG--000J-A	SMT 0 J 1/16W
L18		VRMDNUG--000J-A	SMT 0 J 1/16W
L19		RFIL-5231T8600A	BEAD CORE (0805)
L20		RFIL-5231T8600A	BEAD CORE (0805)
L21		RFIL-5231T8600A	BEAD CORE (0805)
L22		RFIL-5231T8600A	BEAD CORE (0805)
L23		RFIL-5231T8600A	BEAD CORE (0805)
L24		RFIL-5232T8300A	BEAD CORE (0603)
L25		RFIL-5187T8500A	BEAD CORE (1206)
L26		RFIL-5187T8500A	BEAD CORE (1206)
L27		RFIL-5187T8500A	BEAD CORE (1206)
L28		RFIL-5187T8500A	BEAD CORE (1206)
L29		RFIL-5187T8500A	BEAD CORE (1206)
L31		VRMDNVG--000J-A	SMT 0 J 1/16W
L33		RFIL-5187T8500A	BEAD CORE (1206)
L35		RFIL-5187T8500A	BEAD CORE (1206)
L36		RFIL-5187T8500A	BEAD CORE (1206)
L37		RFIL-5187T8500A	BEAD CORE (1206)
L38		RFIL-5187T8500A	BEAD CORE (1206)
L40		RFIL-5231T8600A	BEAD CORE (0805)
L41		RFIL-5231T8600A	BEAD CORE (0805)
L42		RFIL-5231T8600A	BEAD CORE (0805)
L43		RFIL-5231T8600A	BEAD CORE (0805)
L44		RFIL-5231T8600A	BEAD CORE (0805)
L45		RFIL-5231T8600A	BEAD CORE (0805)
L46		RFIL-5231T8600A	BEAD CORE (0805)
L47		RFIL-5187T8500A	BEAD CORE (1206)
R1		VRMDNVG--750J-A	SMT 75 J 1/16W
R2		VRMDNVG--750J-A	SMT 75 J 1/16W
R3		VRMDNVG--750J-A	SMT 75 J 1/16W
R4		VRMDNVG--750J-A	SMT 75 J 1/16W
R5		VRMDNVG--750J-A	SMT 75 J 1/16W
R6		VRMDNVG--750J-A	SMT 75 J 1/16W
R7		VRMDNVG--470J-A	SMT 47 J 1/16W
R8		VRMDNVG--000J-A	SMT 0 J 1/16W
R9		VRMDNVG--103J-A	SMT 10K J 1/16W
R10		VRMDNVG--103J-A	SMT 10K J 1/16W
R11		VRMDNVG--332J-A	SMT 3.3K J 1/16W
R12		VRMDNVG--151J-A	SMT 150 J 1/16W
R13		VRMDNVG--151J-A	SMT 150 J 1/16W
R14		VRMDNVG--202J-A	SMT 2K J 1/16W
R15		VRMDNVG--202J-A	SMT 2K J 1/16W
R16		VRMDNVG--151J-A	SMT 150 J 1/16W
R17		VRMDNVG--220J-A	SMT 22 J 1/16W
R18		VRMDNVG--151J-A	SMT 150 J 1/16W
R19		VRMDNVG--103J-A	SMT 10K J 1/16W

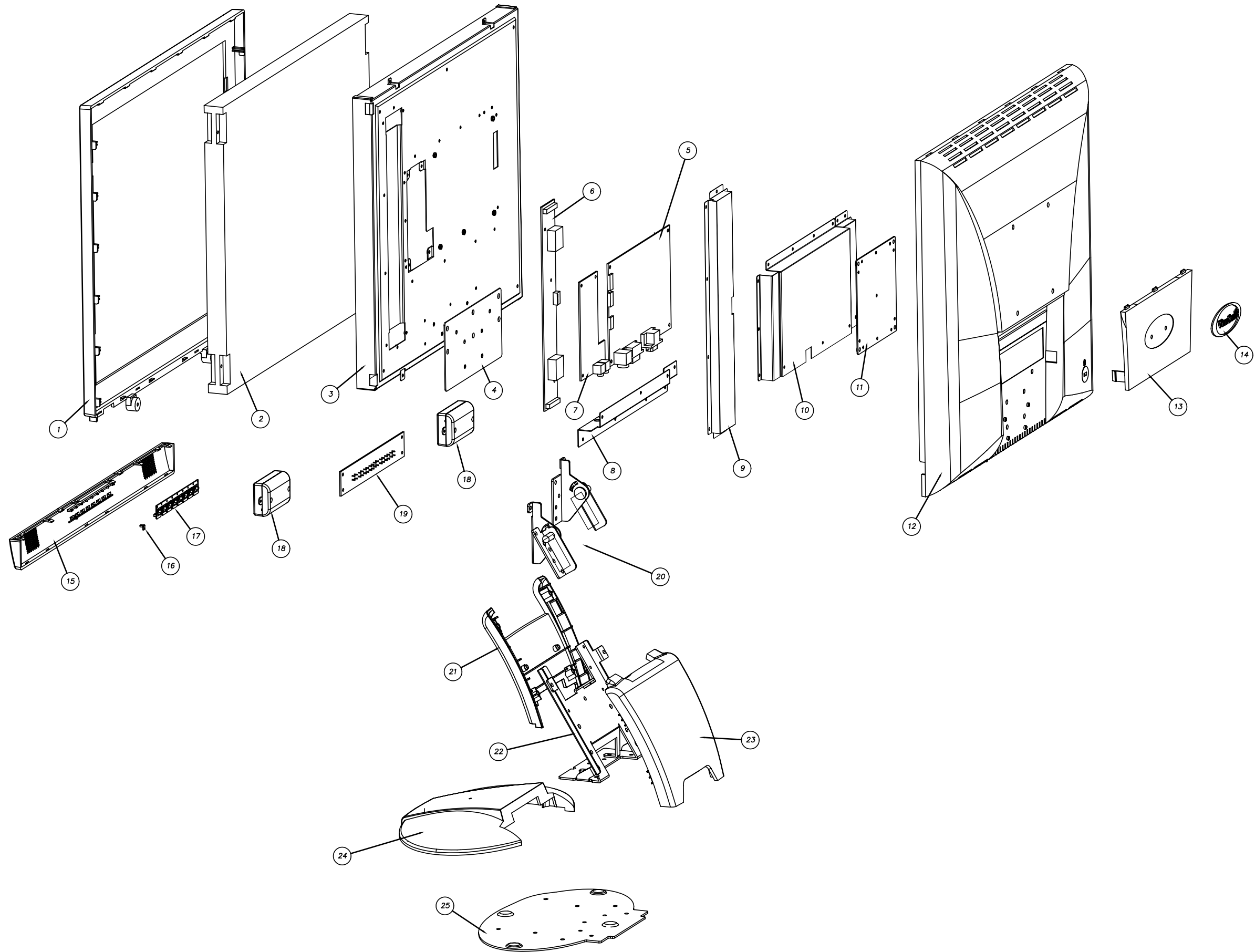
R20		VRMDNVG--103J-A	SMT 10K J 1/16W
R21		VRMDNVG--101J-A	SMT 100 J 1/16W
R22		VRMDNVG--101J-A	SMT 100 J 1/16W
R23		VRMDNVG--103J-A	SMT 10K J 1/16W
R24		VRMDNVG--101J-A	SMT 100 J 1/16W
R28		VRMDNVG--202J-A	SMT 2K J 1/16W
R37		VRMDNVG--330J-A	SMT 33 J 1/16W
R38		VRMDNVG--000J-A	SMT 0 J 1/16W
R39		VRMDNVG--330J-A	SMT 33 J 1/16W
R40		VRMDNVG--330J-A	SMT 33 J 1/16W
R41		VRMDNVG--330J-A	SMT 33 J 1/16W
R42		VRMDNVG--330J-A	SMT 33 J 1/16W
R43		VRMDNVG--330J-A	SMT 33 J 1/16W
R44		RFIL-5235T8600A	BEAD CORE (0805)
R45		VRMDNVG--472J-A	SMT 4.7K J 1/16W
R46		VRMDNVG--472J-A	SMT 4.7K J 1/16W
R49		VRMDNVG--330J-A	SMT 33 J 1/16W
R50		VRMDNVG--220J-A	SMT 22 J 1/16W
R52		VRMDNVG--220J-A	SMT 22 J 1/16W
R53		VRMDNVG--4R7J-A	SMT 4.7 J 1/16W
R54		VRMDNVG--220J-A	SMT 22 J 1/16W
R55		VRMDNVG--220J-A	SMT 22 J 1/16W
R56		VRMDNVG--220J-A	SMT 22 J 1/16W
R58		VRMDNVG--000J-A	SMT 0 J 1/16W
R60		VRMDNVG--000J-A	SMT 0 J 1/16W
R61		VRMDNVG--102J-A	SMT 1K J 1/16W
R62		VRMDNVG--101J-A	SMT 100 J 1/16W
R63		VRMDNVG--101J-A	SMT 100 J 1/16W
R64		VRMDNVG--330J-A	SMT 33 J 1/16W
R65		VRMDNVG--330J-A	SMT 33 J 1/16W
R66		VRMDNVG--101J-A	SMT 100 J 1/16W
R67		VRMDNVG--102J-A	SMT 1K J 1/16W
R68		VRMDNVA--330J-A	SMT 33 J 1/16W
R69		VRMDNVG--202J-A	SMT 2K J 1/16W
R70		VRMDNVG--202J-A	SMT 2K J 1/16W
R71		VRMDNVA--330J-A	SMT 33 J 1/16W
R72		VRMDNVG--105J-A	SMT 1M J 1/16W
R73		VRMDNVG--221J-A	SMT 220 J 1/16W
R74		VRMDNVG--101J-A	SMT 100 J 1/16W
R75		VRMDNVG--330J-A	SMT 33 J 1/16W
R76		VRMDNVG--330J-A	SMT 33 J 1/16W
R77		VRMDNVG--472J-A	SMT 4.7K J 1/16W
R78		VRMDNVG--330J-A	SMT 33 J 1/16W
R79		VRMDNVG--330J-A	SMT 33 J 1/16W
R80		VRMDNVG--000J-A	SMT 0 J 1/16W
R82		VRMDNVG--102J-A	SMT 1K J 1/16W
R83		VRMDNVG--103J-A	SMT 10K J 1/16W
R84		VRMDNVG--220J-A	SMT 22 J 1/16W
R85		VRMDNVG--000J-A	SMT 0 J 1/16W
R86		VRMDNVG--000J-A	SMT 0 J 1/16w
R88		VRMDNVG--104J-A	SMT 100K J 1/16W
R89		VRMDNVG--243J-A	SMT 24K J 1/16W
R90		VRMDNVG--243J-A	SMT 24K J 1/16W
R91		VRMDNVG--472J-A	SMT 4.7K J 1/16W
R92		VRMDNVG--472J-A	SMT 4.7K J 1/16W
R93		VRMDNVG--104J-A	SMT 100K J 1/16W
R94		VRMDNVG--103J-A	SMT 10K J 1/16W
R95		VRMDNVG--103J-A	SMT 10K J 1/16W
R96		VRMDNVG--103J-A	SMT 10K J 1/16W

R97		VRMDNVG--202J-A	SMT 2K J 1/16W
R98		VRMDNVG--202J-A	SMT 2K J 1/16W
R99		VRMDNVG--202J-A	SMT 2K J 1/16W
R100		VRMDNVG--202J-A	SMT 2K J 1/16W
R101		VRMDNVG--202J-A	SMT 2K J 1/16W
R102		VRMDNVG--202J-A	SMT 2K J 1/16W
R103		VRMDNVG--202J-A	SMT 2K J 1/16W
R104		VRMDNVG--202J-A	SMT 2K J 1/16W
R105		VRMDNVG--472J-A	SMT 4.7K J 1/16W
R106		VRMDNVG--000J-A	SMT 0 J 1/16W
R107		VRNmNVG--000J-A	SMT 0 J 1/16W
R108		VRMDNVG--472J-A	SKr 4.7K J 1/16W
R109		VRMDNVG--472J-A	SKr 4.7K J 1/16W
R110		VRMDNVG--472J-A	SMT 4.7K J 1/16W
R111		VRMDNVG--472J-A	SMT 4.7K J 116W
R151		VRMDNVG--102J-A	SMT 1K J 1/16W
R152		VRMDNVG--101J-A	SMT 100 J 1/16W
R153		VRMDNVG--104J-A	SMT 100K J 1/16W
RP1		RNWRB1618T8101M	R 8PIN 100ohm
RP2		RNWRB1618T8101M	R 8PIN 100ohm
RP3		RNWRB1618T8101M	R 8PIN 100ohm
RP4		RNWRB1618T8101M	R 8PIN 100ohm
RP5		RNWRB1618T8101M	R 8PIN 100ohm
RP6		RNWRB1618T8101M	R 8PIN 100ohm
RP19		RNWRB1618T8330M	R 8PIN 33ohm
RP20		RNWRB1618T8330M	R 8PIN 33ohm
RP21		RNWRB1618T8330M	R 8PIN 33ohm
RP22		RNWRB1618T8330M	R 8PIN 33ohm
RP23		RNWRB1618T8330M	R 8PIN 33ohm
RP24		RNWRB1618T8330M	R 8PIN 33ohm
RP25		RNWRB1618T8330M	R 8PIN 33ohm
RP26		RNWRB1618T8330M	R 8PIN 33ohm
RP27		RNWRB1618T8330M	R 8PIN 33ohm
RP28		RNWRB1618T8330M	R 8PIN 33ohm
RP29		RNWRB1618T8330M	R 8PIN 33ohm
RP30		RNWRB1618T8330M	R 8PIN 33ohm
RP31		RNWRB1618T8330M	R 8PIN 33ohm
RP33		RNWRB1618T8472A	R 8PIN 4.7Kohm
RP34		RNWRB1618T8472A	R 8PIN 4.7Kohm
RP35		RNWRB1618T8472A	R 8PIN 4.7Kohm
RP36		RNWRB1618T8472A	R 8PIN 4.7Kohm
RP37		RNWRB1618T8472A	R 8PIN 4.7Kohm
RP38		RNWRB1618T8472A	R 8PIN 4.7Kohm
RP39		RNWRB1618T8472A	R 8PIN 4.7Kohm
AUDIO BOARD		QPWB-5417T8----	AUDIO BOARD
C158	E-C-0404-1069	VCSFDU1HY104Z-P	C 0.1U Z 50V
C160	E-C-0404-3973	VCEACU1CH107M-P	E 100U M 16V
C161		VCEACU1CG477M-P	E 470U M 16V
C162		VCEACU1CG477M-P	E 470U M 16V
C163	E-C-0404-0943	VCEACU1HH475M-P	E 4.7U M 50V
C164	E-C-0404-3973	VCEACU1CH107M-P	E 100U M 16V
C165	E-C-0404-1069	VCSFDU1HY104Z-P	C 0.1U Z 50V
C169	E-C-0404-1069	VCSFDU1HY104Z-P	C 0.1U Z 50V
C170		VCEACU1CG477M-P	E 470U M 16V
C171	E-C-0404-1069	VCSFDU1HY104Z-P	C 0.1U Z 50V
C172	E-C-0404-3994	VCEACU1HH225M-P	E 2.2U M 50V
C173		VCLFHN1HG104Z-A	SMT.1U Z 50V
C174		VCLFHN1HG104Z-A	SMT.1U Z 50V
C175		VCLFHN1EG224Z-A	SMT .22U Z 25V

C176		VCICHN1HG102K-A	SW 1000P Z 50V
C177	E-C-0404-0944	VCEACU1HH105M-P	E 1U M 16V
C178	E-C-0404-0944	VCEACU1HH105M-P	E 1U M 16V
C179	E-C-0404-0944	VCEACU1HH105M-P	E 1U M 16V
C180	E-C-0404-0944	VCEACU1HH105M-P	E 1U M 16V
C181	E-C-0404-3994	VCEACU1HH225M-P	E 2.2U M 50V
C182		VCLFHN1EG224Z-A	SMT .22U Z 25V
C183		VCICHN1HG102K-A	SMT 1000P Z 50V
C184	E-C-0404-2263	VCEACU1EH226M-P	E 22U M 25V
C185		VCLFHN1HG104Z-A	SMT.1U Z 50V
C186		VCLFHN1HG104Z-A	SMT.1U Z 50V
C187	E-C-0404-3973	VCEACU1CH107M-P	E 100U M 16V
C188		VCLFHN1HG104Z-A	SMT.1U Z 50V
C189	E-C-0404-1199	VCDSDU1HL100D-P	C 10P D 50V
C190	E-C-0404-1199	VCDSDU1HL100D-P	C 10P D 50V
L47		RC0RA1021D8--HU	BEAD CORE
L48		RC0RA1021D8--HU	BEAD CORE
ZD191	E-D-0403-1832	VSZMTZJ3.9B---U	ZENER DIODE
ZD192	E-D-0403-1832	VSZMTZJ3.9B---U	ZENER DIODE
ZD193	E-D-0403-1832	VSZMTZJ3.9B---U	ZENER DIODE
ZD194	E-D-0403-1832	VSZMTZJ3.9B---U	ZENER DIODE
ZD191 2nd	E-D-0403-1831	VSZBX79C3V9B--U	ZENER DIODE 2ND
ZD192 2nd	E-D-0403-1831	VSZBX79C3V9B--U	ZENER DIODE 3ND
ZD193 2nd	E-D-0403-1831	VSZBX79C3V9B--U	ZENER DIODE 4ND
ZD194 2nd	E-D-0403-1831	VSZBX79C3V9B--U	ZENER DIODE 2ND
J1	M-WR-0828-0472	QJUM-1045D8075-	JUMPER
J10	M-WR-0828-0471	QJUM-1045D8050-	JUMPER
J2	M-WR-0828-0472	QJUM-1045D8075-	JUMPER
J3	M-WR-0828-0472	QJUM-1045D8075-	JUMPER
J4	M-WR-0828-0473	QJUM-1045D8100-	JUMPER
J5	M-WR-0828-0473	QJUM-1045D8100-	JUMPER
J6	M-WR-0828-0475	QJUM-1045D8150-	JUMPER
J7	M-WR-0828-0471	QJUM-1045D8050-	JUMPER
J8	M-WR-0828-0471	QJUM-1045D8050-	JUMPER
J9	M-WR-0828-0471	QJUM-1045D8050-	JUMPER
L52	M-WR-0828-0473	QJUM-1045D8100-	JUMPER
L50		RFIL-5232T8300A	BEAD CORE
L51		RFIL-5232T8300A	BEAD CORE
U22		VSILA4635A-----	IC 12PIN
U23		VS IPT2313L----A	IC 28PIN
U24		VSIPJ7809CZ----	IC 3PIN
U24 SECOND SOURCE		VS IPL7809B-----	IC 3PIN 2nd
U24 SECOND SOURCE		VSIL7809CV-----	IC 3PIN and
HEAT SINK FOR U22		PRDA-1253D8----	RADIATOR
SCREW		XEASD30P08000--	SCREW
AUDIO IN		QJAKS0005D8D--G	PHONE JACK
JP3		VCNCP0904SEJST-	CONNECTOR VIN
JP6		VCNCP0907SEJST-	CONNECTOR 7PIN
R105		VRNPTV6--2R2J-U	M 2.2K J 1/6W
R106		VRMPTV6--2R2J-U	M 2.2K J 1/6W
R109	E-R-0405-7020	VRMPTV6--472J-U	M 4.7K J 1/6
R110		VRMDNVG--103J-A	SMT 10K J 1/16W
R111		VRMPTV6--330J-U	M 33 J 1/6W
R112		VRMPTV6--330J-U	M 33 J 1/6
R113		VRMPTV6--242J-U	M 2.4K J 1/6W
R114		VRMPTV6--242J-U	M 2.4K J 1/6W
R115	E-R-0405-1290	VRMPTV6--102J-U	M 1K J 1/6W
R116	E-R-0405-1290	VRMPTV6--102J-U	M 1K J 1/6W
R117	E-R-0405-7020	VRMPTV6--472J-U	M 4.7K J 1/6W

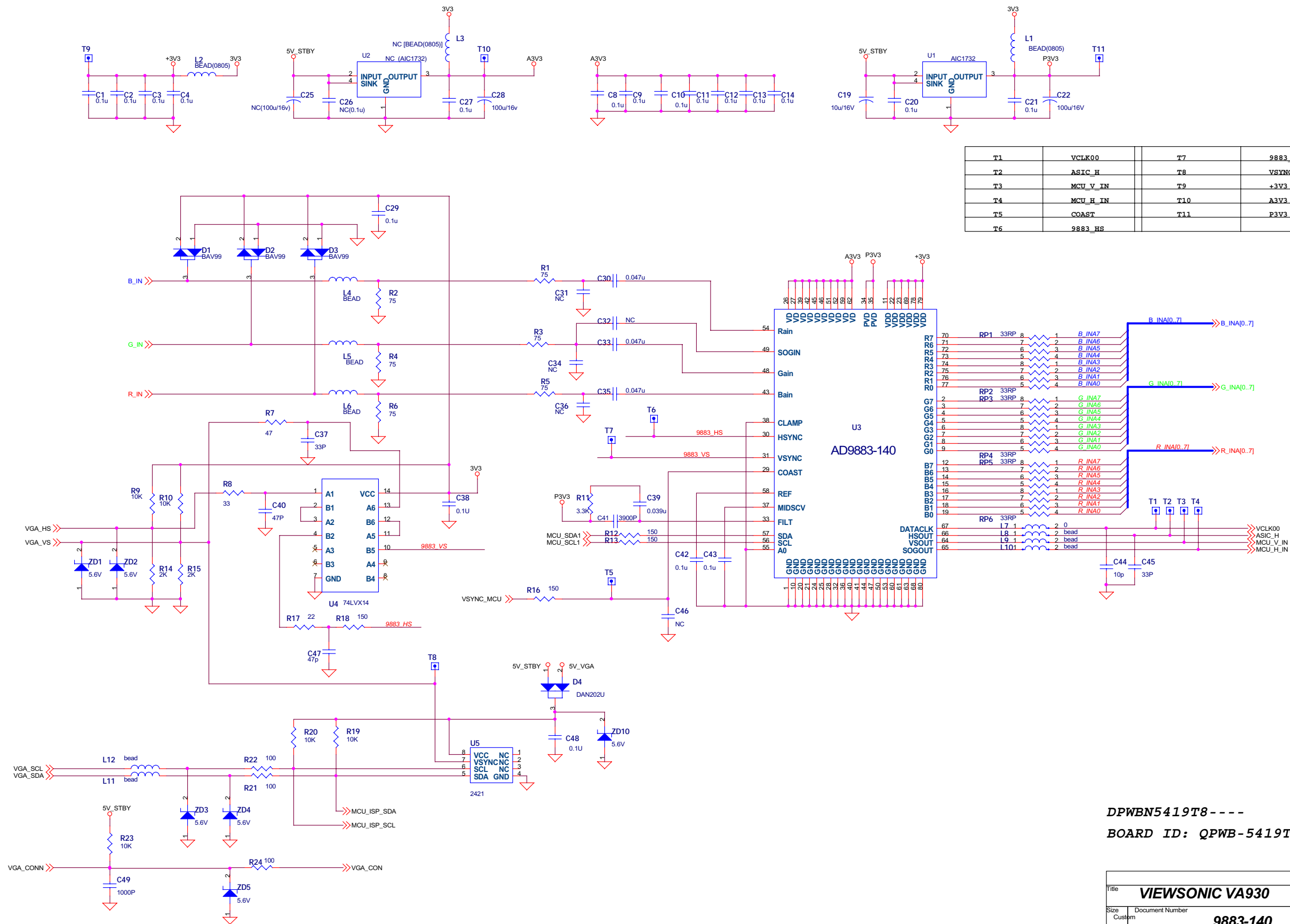
R118	E-R-0405-7020	VRMPTV6--472J-U	M 4.7K J 1/6W
R119		VRMDNVG--103J-A	SMT 10K J 1/16W
R191	E-R-0405-1250	VRMPTV6--103J-U	M 10K J 1/6W
R192	E-R-0405-1250	VRMPTV6--103J-U	M 10K J 1/6W
	LOCATION	VIEWSONIC P/N	PARTS NO
	DESCRIPTION		
CONTROL BOARD		QPWB-5418T8--1-	CONTROL BOARD
C193		VCICHNIHHI0J-A	SMT 100P J 50V
C194		VCICHN1HH101J-A	SMT 100P J 50V
C195		VCICHNIHH101J-A	SMT 100P J 50V
J1	M-WR-0828-0472	QJUM-1045D8075-	JUMPER
J2	M-WR-0828-0472	QJUM-1045D8075-	JUMPER
J3	M-WR-0828-0472	QJUM-1045D8075-	JUMPER
J4	M-WR-0828-0472	QJUM-1045D8075-	JUMPER
J5	M-WR-0828-0472	QJUM-1045D8075-	JUMPER
J6	M-WR-0828-0472	QJUM-1045D8075-	JUMPER
L53		RFIL-5232T8300A	BEAD CORE
L54		RFIL-5232T8300A	BEAD CORE
L55		RFIL-5232T8300A	BEAD CORE
L56		RFIL-5232T8300A	BEAD CORE
L57		RFIL-5232T8300A	BEAD CORE
SW1		QSW-A1124T8----	SWITCH
SW2		QSW-A1124T8----	SWITCH
SW3		QSW-A1124T8----	SWITCH
SW4		QSW-A1124T8----	SWITCH
SW5		QSW-A1124T8----	SWITCH
SW6		QSW-A1124T8----	SWITCH
SW7		QSW-A1124T8----	SWITCH
SW8		QSW-A1124T8----	SWITCH
LED		VSPSPR-39MVWF--	LED
JP7		VCNCP0908REJST-	CONNECTOR 8PIN
R120		VRMDNVG--472J-A	SMT 4.7K J 1/16W
R121		VRMDNVG--222J-A	SMT 2.2K J 1/16W
R122		VRMDNVG--752J-A	SMT 7.5K J 1/16W
R123		VRMDNVG--472J-A	SMT 4.7K J 1/16W
R124		VRMDNVG--222J-A	SMT 2.2K J 1/16W
R125		VRMDNVG--203J-A	SMT 20K J 1/16W
R126		VRMDNVG--752J-A	SMT 7.5K J 1/16W

8. EXPLODED DIAGRAM



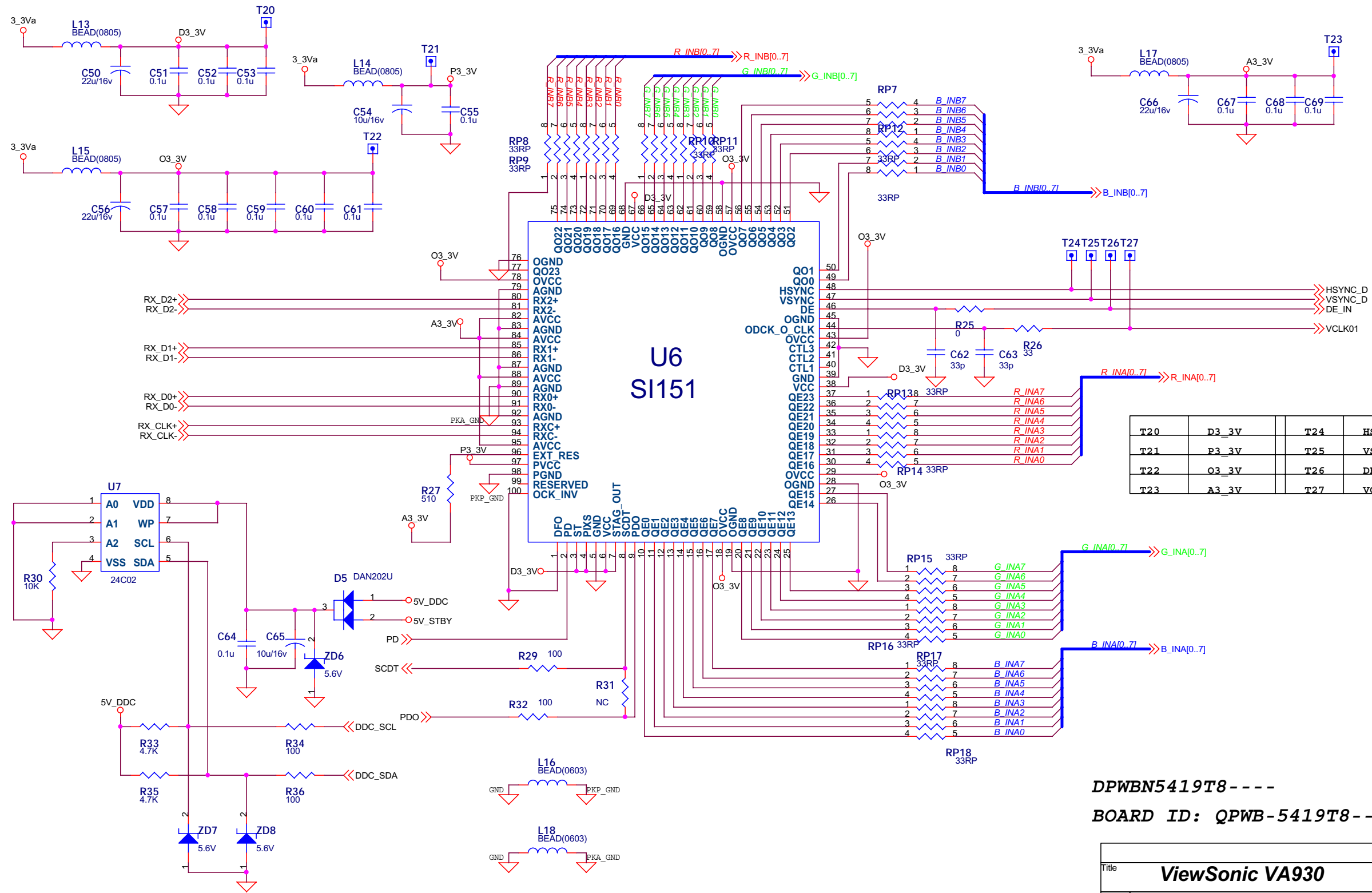
MECHANICAL PARTS LIST				
NO	VIEWSONIC P/N	PART NO	QTY	REMARK
1	C-FP-0301-0894	GCABA2104D8F---	1	CAB-A
2		CPWB-5419T8FUSA	1	FUJISTU PANEL (19")
3	M-MS-0808-8262	LANGF2068D8----	1	MAIN METAL
4	M-MS-0808-8263	LANGH0029D8----	1	HINGE SUPPORT
5	B-MB-0201-0697	DPWBN5419T8---A	1	M/B BOARD ASSY
6	B-SB-0221-0463	RUNTP5523T8----	1	INVERTER BOARD
7	B-AC-0215-0034	DPWBN5417T8----	1	AUDIO BOARD ASS'Y
8	M-MS-0808-8258	LANG-2050D8----	1	D-SUB METAL
9		PSLDM6478D8----	1	INVERTER SHIELD
10	M-MS-0808-8267	PSLDM6477D8----	1	SHIELD
11	M-MS-0808-8264	LANGN1714D8----	1	VESA METAL
12	M-CV-0830-2342	GCABB1769D8F---	1	CAB-B
13	C-BC-0302-0436	GCOVD2442D8F---	1	BACK COVER
14	M-LB-0813-0710	HBDG-1278D8F---	1	VE-LOGO
15	M-CV-0830-2335	GMSKP1325D8F---	1	SPEAKER-COVER
16	M-MS-0808-8257	HDECP1937D8F---	1	LENS
17	PL-NB-0707-0175	JKNBP2311D8F---	1	KNOB
18	E-SK-0412-0054	RSPKCL015D84FG-	2	SPEAKER
19	B-SWB-0210-0042	DPWBN5418T8----	1	CONTROL BOARD ASS'Y
20	M-MS-0808-8265	MHNGM0031D8----	1	HINGE ASSEMBLY
21	M-CV-0830-2336	GSTN-2876D8F---	1	BASE FRONT COVER
22	M-MS-0808-8260	LANG-2052D8----	1	BASE SUPPORT
23	M-CV-0830-2337	GSTN-2877D8F---	1	BASE-BACK COVER
24	PL-PS-0715-0168	GSTN-2875D8F---	1	BASE
25	M-MS-0808-8259	LANG-2051D8----	1	BASE METAL

9 . SCHEMATIC DIAGRAM



DPWBN5419T8----
BOARD ID: QPWB-5419T8----C

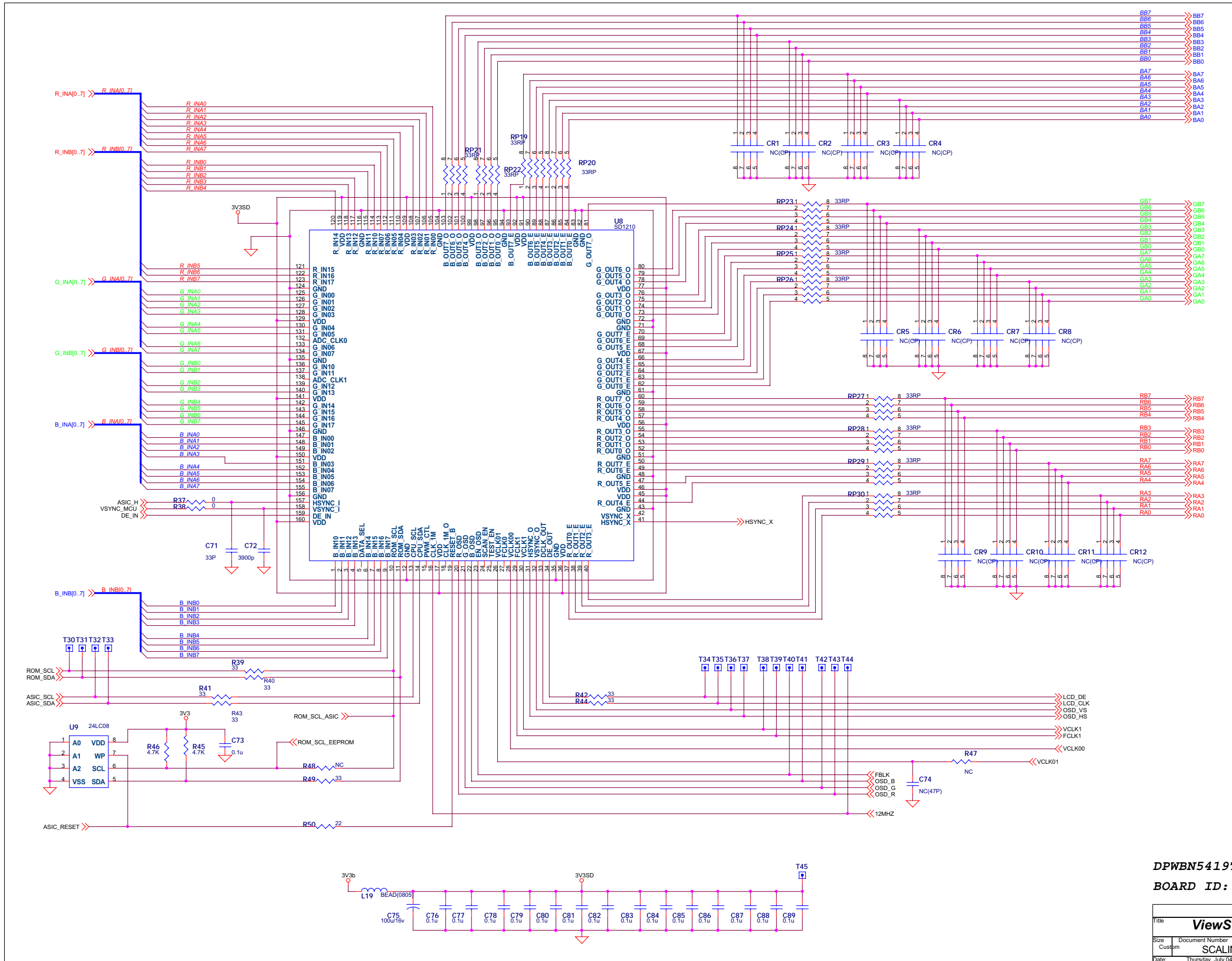
Title			VIEWSONIC VA930		
Size	Document Number	Rev			
Custom	9883-140	C			
Date:	Thursday, July 04, 2002	Sheet	1	of	8



T20	D3_3V	T24	HSYNC_D
T21	P3_3V	T25	VSYNC_D
T22	O3_3V	T26	DE_IN
T23	A3_3V	T27	VCLK01

DPWBN5419T8----
 BOARD ID: QPWB-5419T8---C

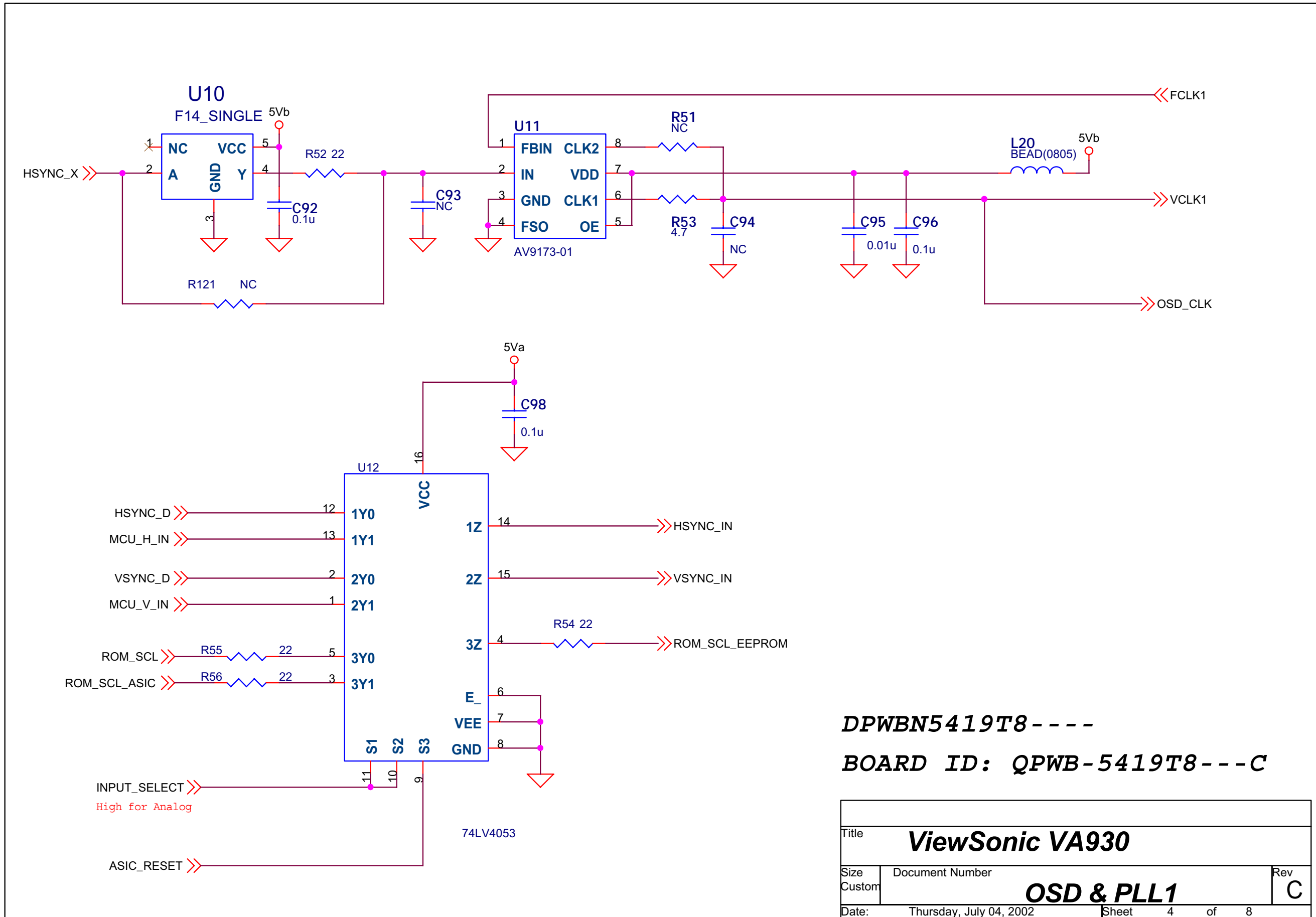
Title		ViewSonic VA930	
Size	Document Number	SIL151	
Custom		Rev	C
Date:	Thursday, July 04, 2002	Sheet	of



T30	ROM_SCL
T31	ROM_SDA
T32	ASIC_SCL
T33	ASIC_SDA
T34	LCD_DE
T35	LCD_CLK
T36	OSD_VS
T37	OSD_HS
T38	VCLK1
T39	FCLK1
T40	FBLK
T41	OSD_B
T42	OSD_G
T43	OSD_R
T44	12MHZ
T45	3V3SD

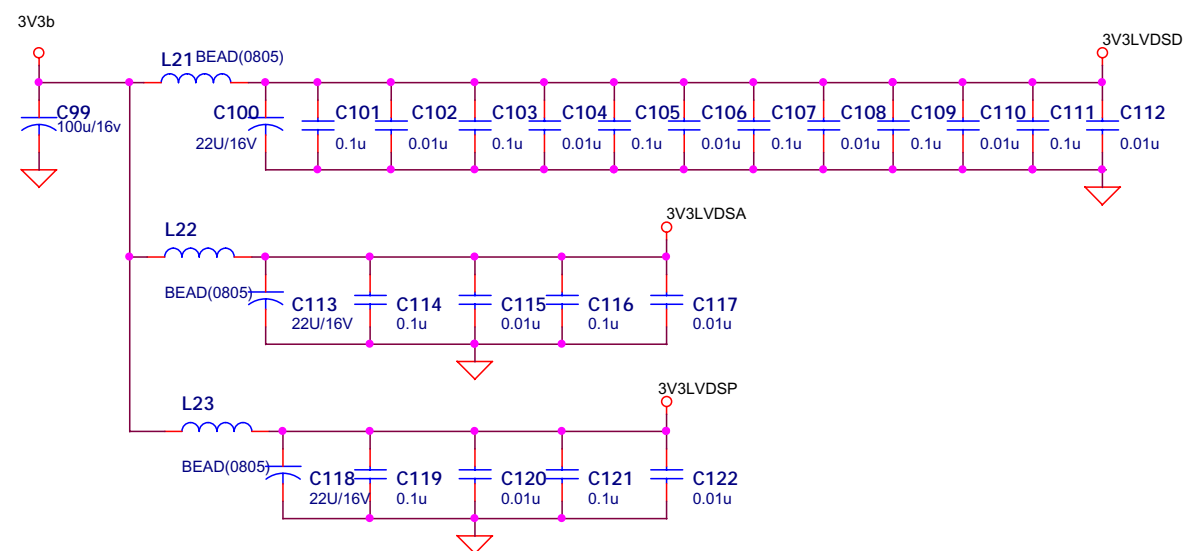
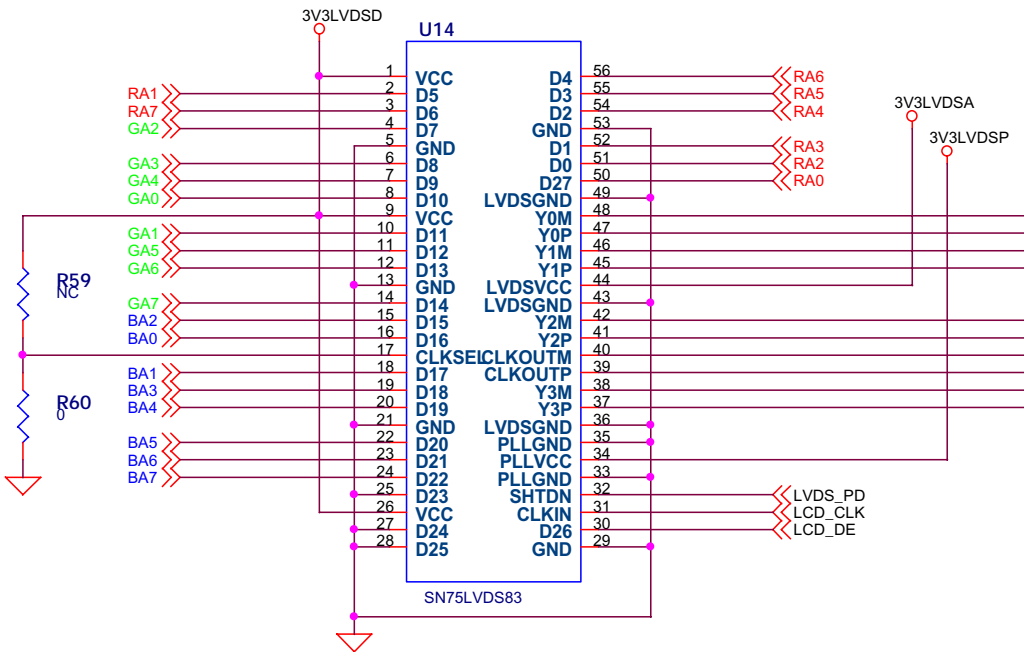
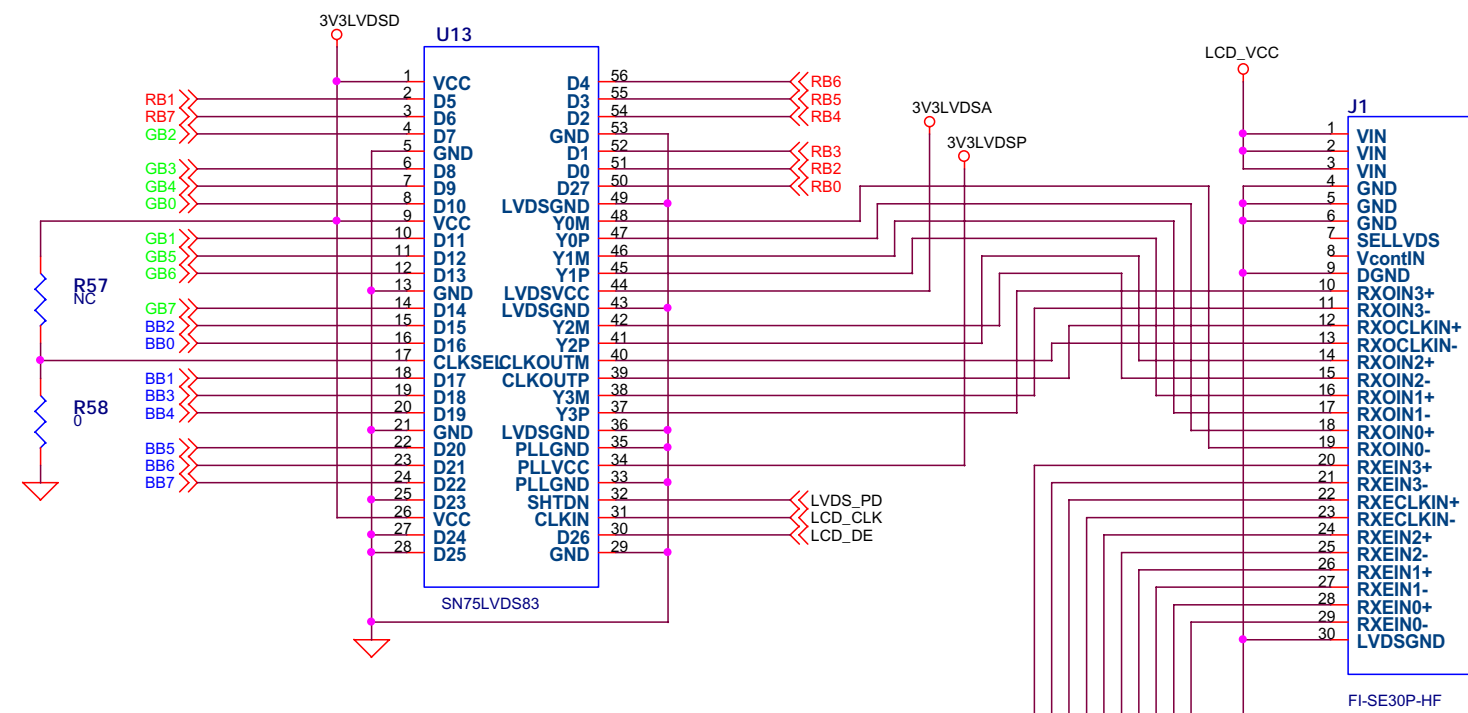
DPWB5419T8----
 BOARD ID: QPWB-5419T8---C

Title			ViewSonic VA930		
Size	Document Number	Rev			
Custom	SCALING CONTROLLER	C			
Date:	Thursday, July 04, 2002	Sheet	of		



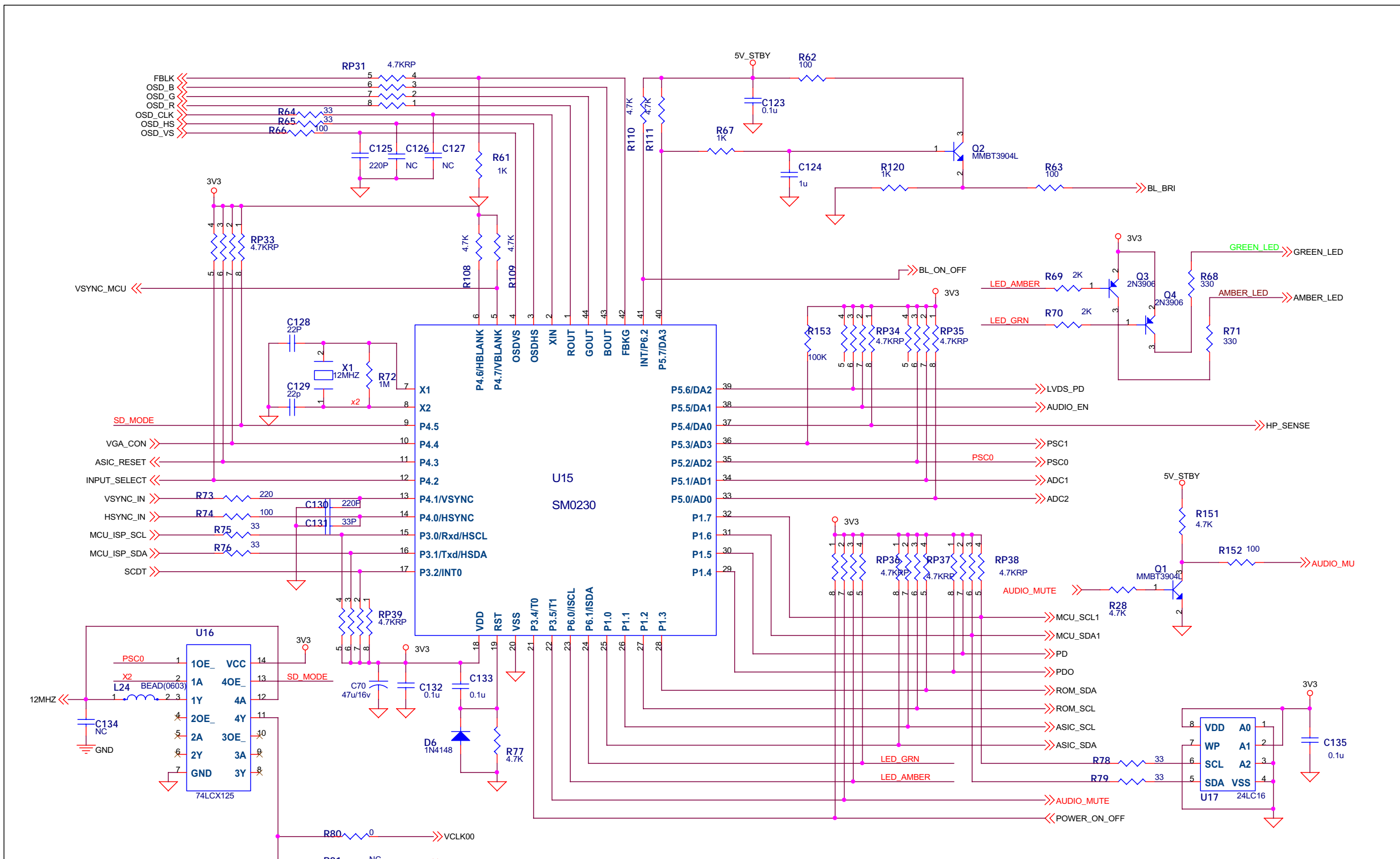
DPWBN5419T8 - - - -
BOARD ID: QPWB-5419T8 - - - -C

Title			ViewSonic VA930		
Size	Document Number				Rev
Custom	OSD & PLL1				C
Date:	Thursday, July 04, 2002		Sheet	4	of 8



DPWBN5419T8----
BOARD ID: QPWB-5419T8---C

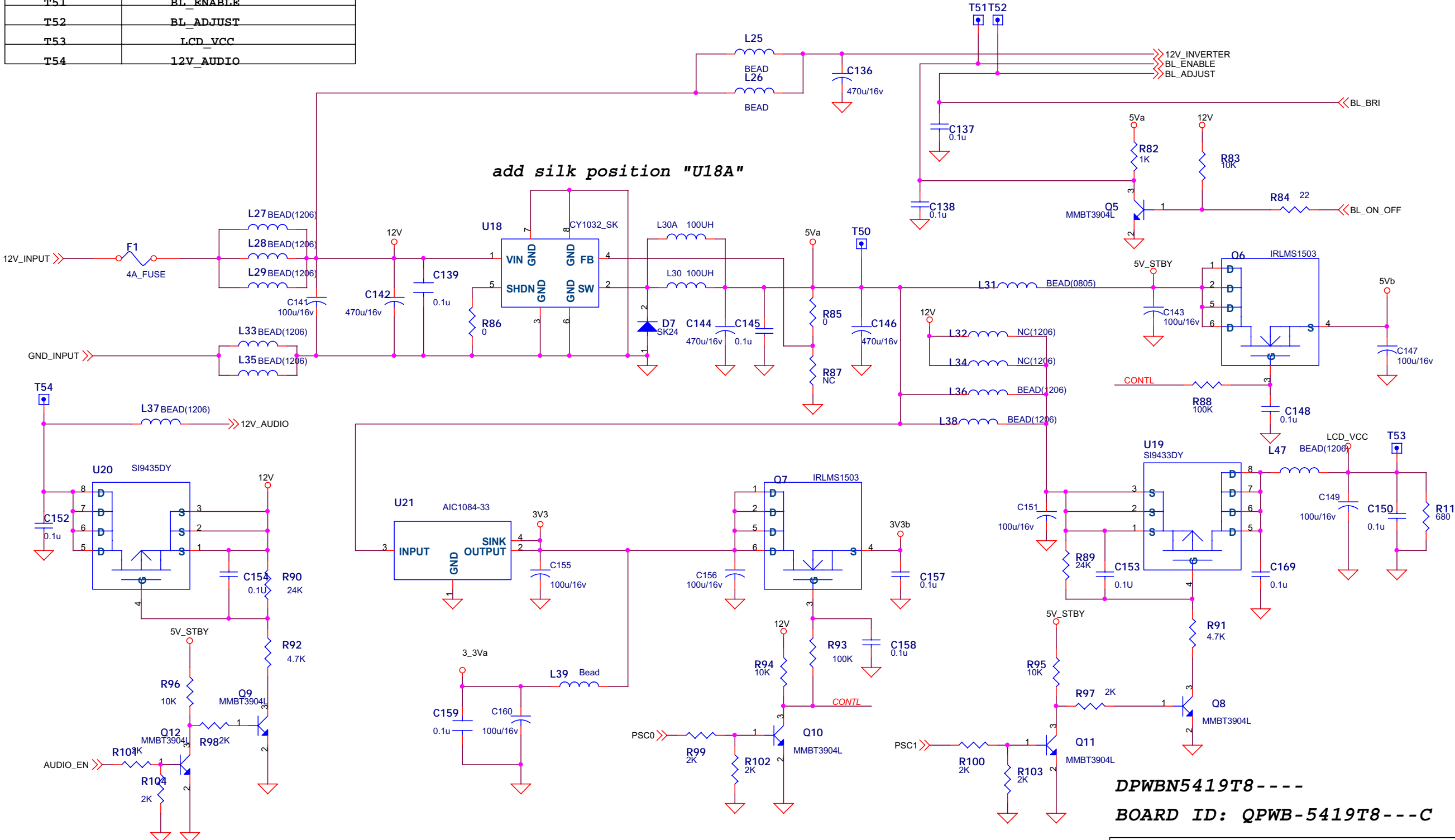
Title			ViewSonic VA930		
Size	Document Number				Rev
Custom	LVDS INTERFACE				C
Date:	Thursday, July 04, 2002	Sheet	of		



DPWB5419T8----
 BOARD ID: QPWB-5419T8---C

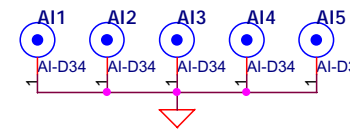
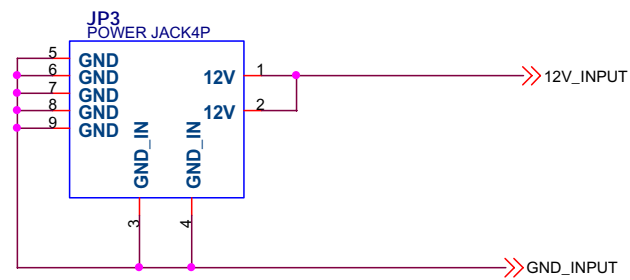
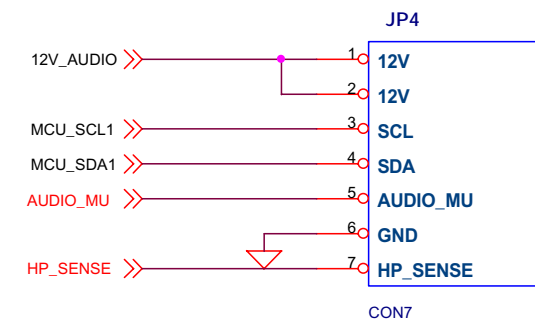
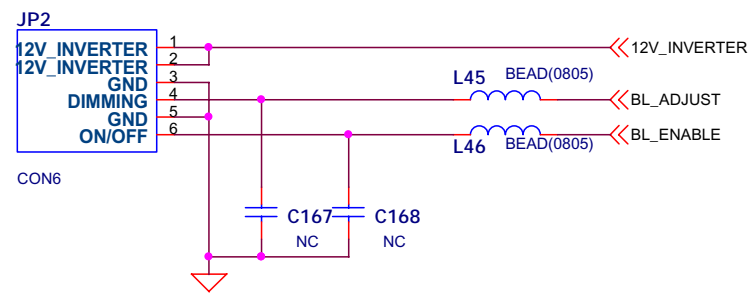
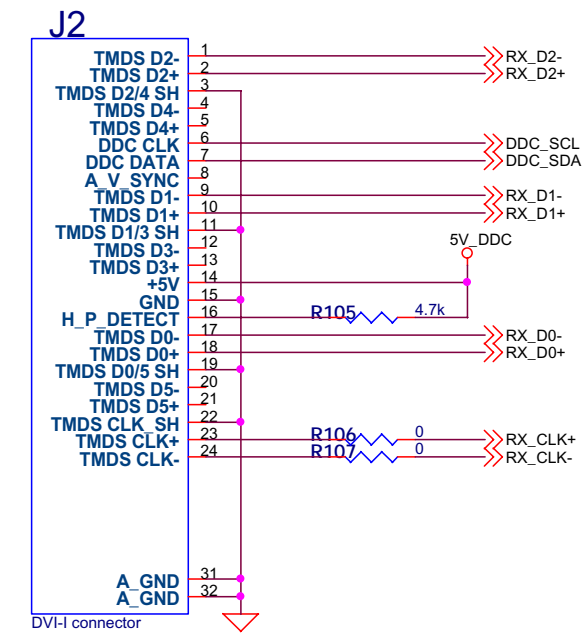
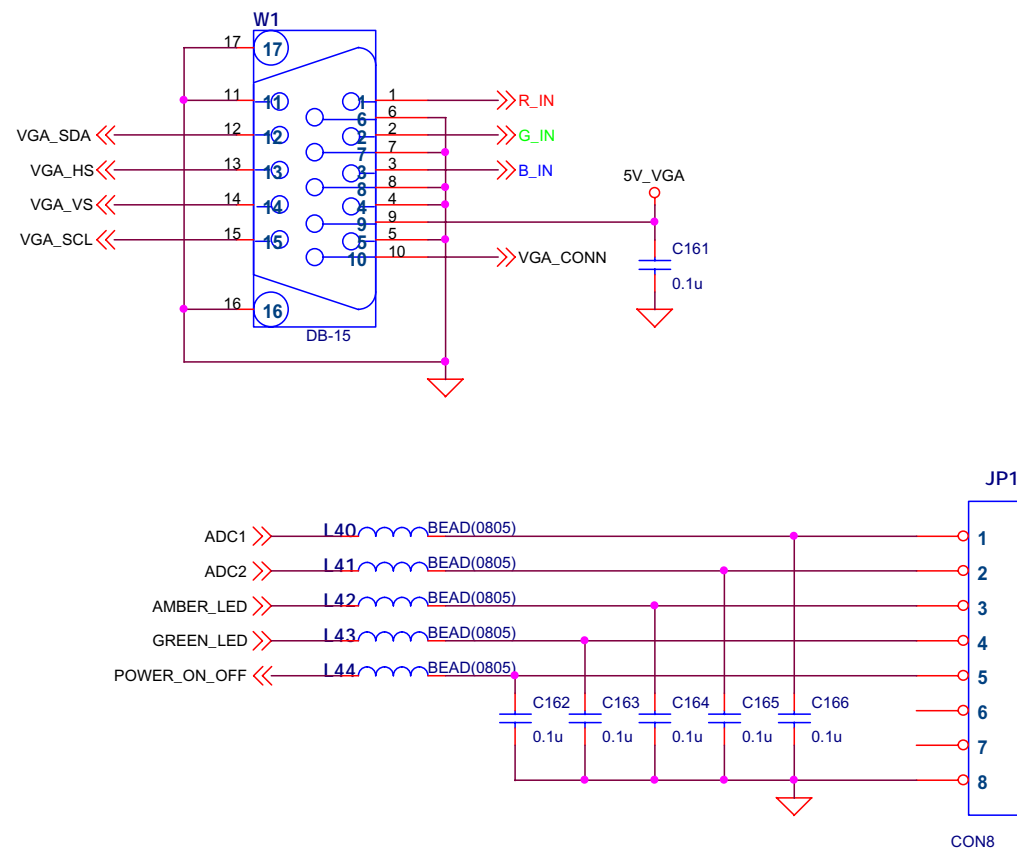
Title		ViewSonic VA930	
Size	Document Number	Rev	
Custom	SMO230	C	
Date:	Thursday, July 04, 2002	Sheet	of

T50	5Va
T51	BL_ENABLE
T52	BL_ADJUST
T53	LCD_VCC
T54	12V_AUDIO



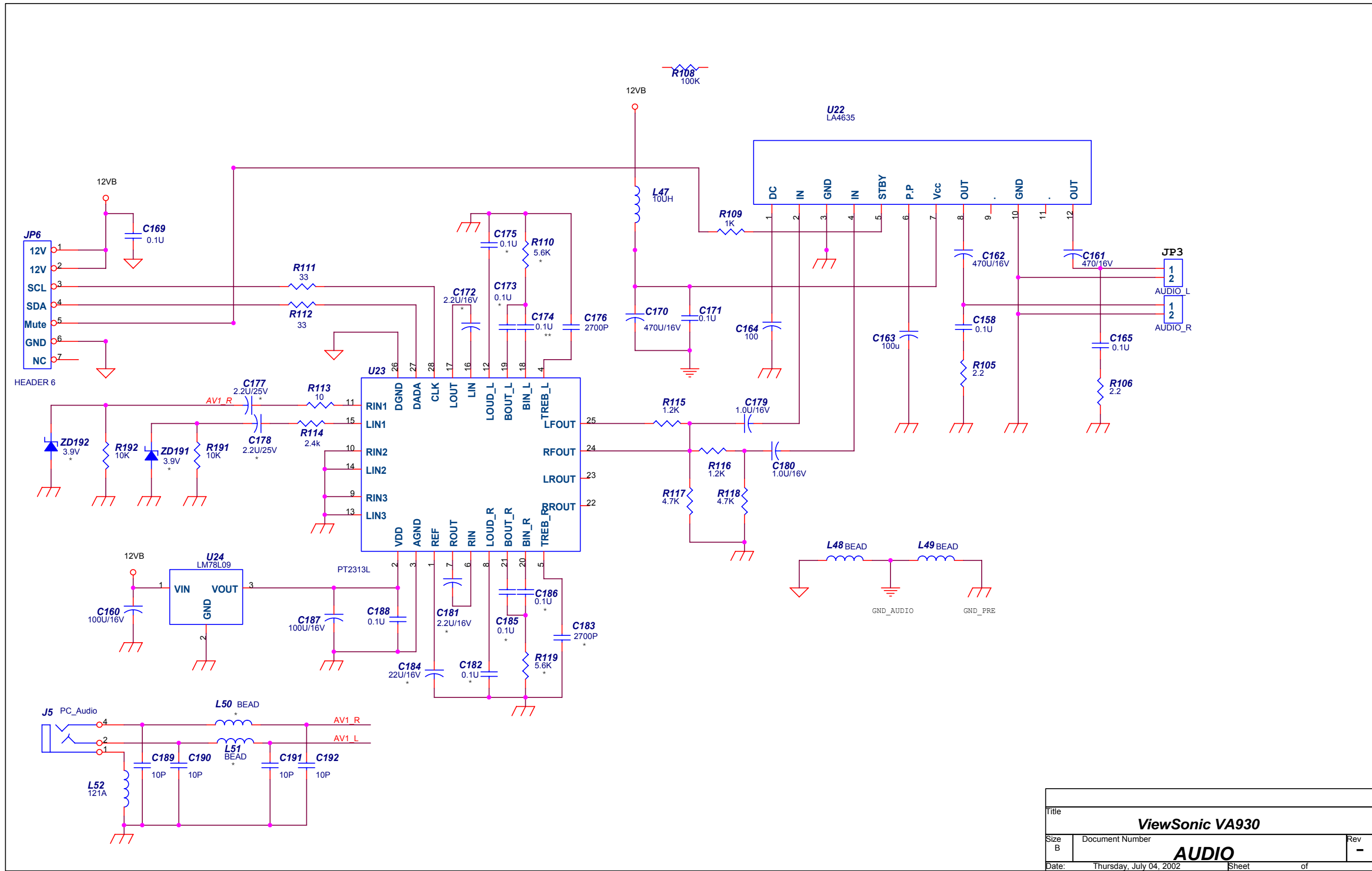
DPWBN5419T8----
BOARD ID: QPWB-5419T8---C

Title		ViewSonic VA930	
Size	Document Number	Rev	
Custom	POWER	C	
Date:	Thursday, July 04, 2002	Sheet	of

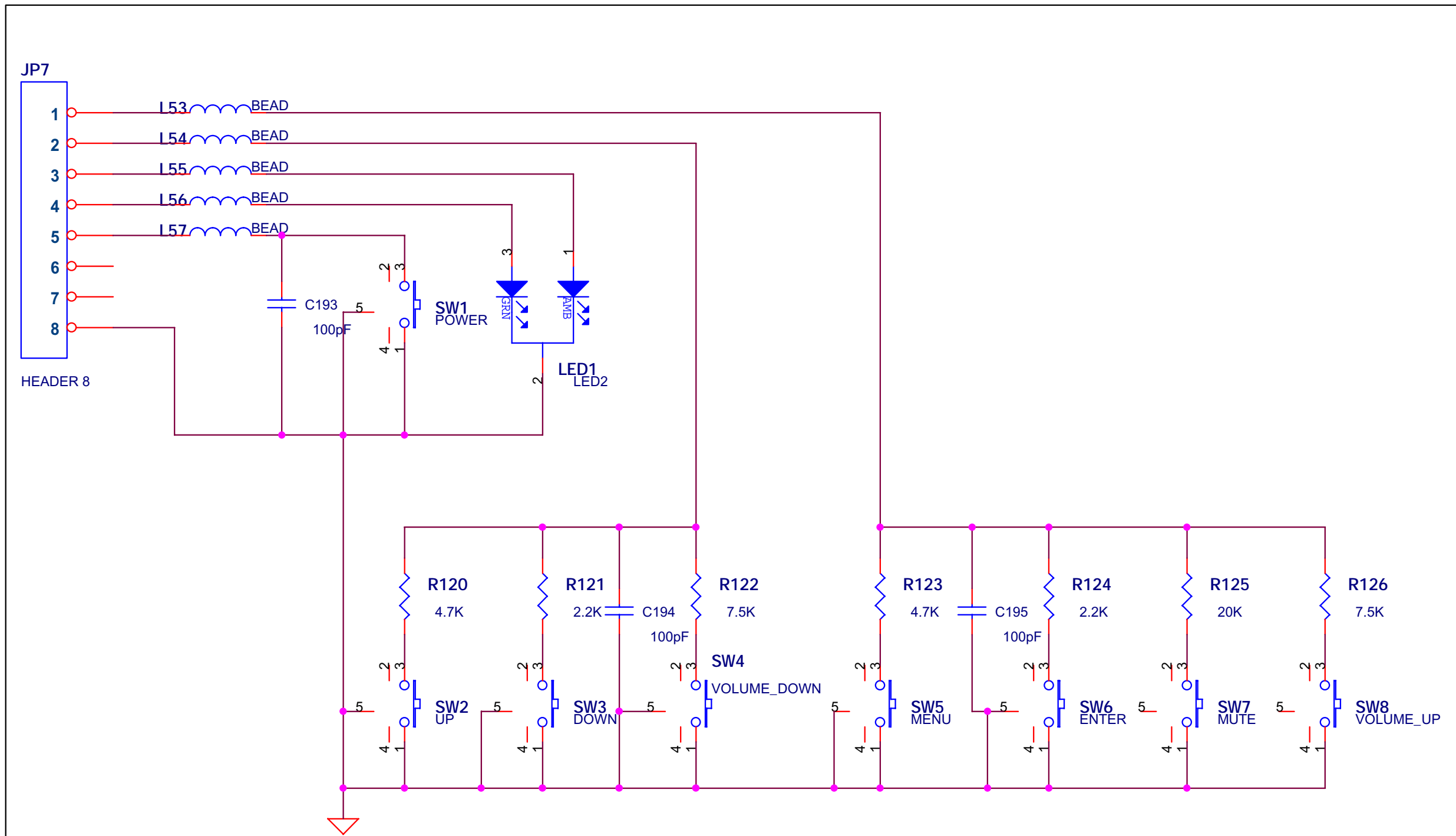


DPWBN5419T8----
BOARD ID: QPWB-5419T8---C

Title			ViewSonic VA930		
Size	Document Number				Rev
Custom	I/O INTERFACE			C	
Date:	Thursday, July 04, 2002	Sheet	of		



Title		
ViewSonic VA930		
Size	Document Number	Rev
B	AUDIO	-
Date:	Thursday, July 04, 2002	Sheet of



Title		
<Title>		
Size A	Document Number	Rev
KEYPAD		
Date:	Thursday, July 04, 2002	Sheet 10 of 10

10. PCB LAYOUT DIAGRAM

